



“During the good times extravagances might be acceptable, but when things are tough every wrong decision makes a difference; so study our brochure, compare our specification and see what you are missing”

PRICE LIST & BROCHURE

**JANUARY 2014**



# The Marshall Company History

**Charles J Marshall (Aberdeen) Ltd celebrated its Diamond Anniversary in 2012. Sixty two years ago, the Marshall brand was conceived by Charles J Marshall; the year was 1952. This tenacious 18-year-old apprentice joiner decided that after his National Service, he would establish his own business producing something that he could sell en-masse. At this time in history the introduction of the new technically advanced tractor was just in its infancy and the young Charles decided this was his time to capitalize on this opportunity.**

While he was posted in Aberdeen, he was able to combine army national service throughout the day while building trailers at night; no mean feat but a win/win situation for this young man. His initial modest ambition was to build himself a factory to supply the whole of Scotland and to be the largest supplier in this territory! To achieve this goal some land and a small croft was purchased, just 6 miles from Aberdeen. Charles managed to secure this at the cost of £2,450. Needless to say his current long suffering neighbours were delighted as they had endured years of noise and constant TV interference from power tools used by this enthusiastic young man.



Above: The 3 - Ton Rear Tipping Hydraulic Trailer first advertised in 1952.



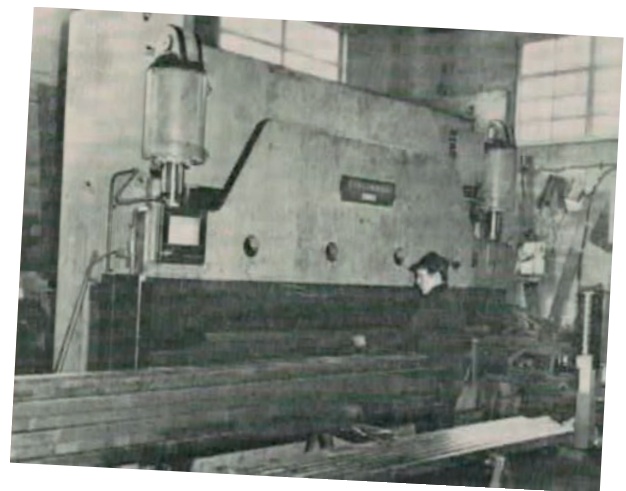
By 1956 the first part of the present factory building was completed, named Chapel Works, it covered a 12,000 sq. ft. site. True to form, the young Charles supervised and even poured the concrete blocks by hand to ensure that the best value was achieved from his investment.

The greatest advantage to his new factory layout was the ability to create the relatively new concept of a production line that allowed for the most efficient use of labour; always an expensive commodity and not to be wasted! Although said tongue in cheek, Charles quickly realised that labour was an essential requirement but had to be used efficiently so the production line was integral to this.

Then as today, Charles invested heavily in his business and purchased vast stocks of steel and other components. This gave him the added advantage of being able to buy at very competitive prices and so produce a more cost effective trailer. The knock on result from this strategy was a rapid expansion of turnover allowing him to further develop the factory premises.

By this stage he was employing all the trades required to manufacture steel and timber trailers. Production output had rocketed up from a mere 46 units built in 1952 to supplying well over 1600 units per year by the mid sixties - no small feat for a joiner!

Equipment was another area of investment that was expanded to keep up with rising demand. A new brake press and guillotine was purchased, the largest north of the Clyde at that time!



Above: The inception of the Hydraulic Press Brake.

Likewise, the shrewd move away from the "slow" arc welders to the latest concept of MIG welders also proved to be a winning formula for speeding up production. Nothing was going to hold him back from achieving his original ambition! The 1970s were the years of strike action and horrendous labour relations and Charles was extremely proud of the fact that he never had a strike and his factory still produced throughout this period. This result, he firmly believes, came from his own work ethic and the fact that even at this stage in business; he worked a full day with his staff on the shop floor. No job was too menial for Charles and no task was asked to be undertaken that he could or would not do himself.

Now producing well over 2000 units per year and with an extremely efficient factory, his focus turned to rotary spreaders to continue to increase production. Once again these spreaders were distributed throughout the country and in partnership with an extensive dealer network that he worked hard to supply. The success of the spreader was further augmented by the introduction of the Marshall slurry tanker in the 1980s.

In 1982 the bright new talent of Charles Richard was introduced and he started his apprenticeship within the firm. Like his father before him, he also worked his way through the shop ensuring he had the same sound understanding of the business as his father and today he feels that nothing really beats the experience gained from doing it yourself. Taking up his present position as managing director in 1998; he has successfully steered the company through the years of BSE and foot and mouth.



**Above: The production line as it was in 1973.**

Like his father before him, he still operates the firm on a daily basis handling all the purchasing, sales, after service and the general management required for a company of this size to function. Throughout its 60 year history, no answer phones have ever been used and Charles R is still fully committed to the fact that customers are what make a business. All this "modern" rubbish of electronically answered phones, emails, faxes, texts are the downfall of many a business as it seems the customer is no longer important enough to be spoken to directly, a position that will never change as long as Charles is in charge.

Today we are still proud of our original Chapel Works premises and we continue to invest and annually spend six figure sums to ensure we stay ahead of our competition. We produce on average 46 units per week that are sold throughout the world and we can now proudly boast we are the UK's oldest and largest trailer manufacturer.



**Above: Robot Welder**

2012 was quite a milestone in the history of our company as we celebrated 60 years in the business and we are proud to be manufacturing trailers and other farm machinery. Perhaps what is more remarkable is the fact that we are still owned and operated by the same family; quite a feat if we say so ourselves! Last year the company also welcomed the next generation into the fold. The grandsons of Charles J Marshall, namely Charles Peter and his brother David, have now completed their studies.

Charles successfully achieved a LLB Hons in Law and graduated from Aberdeen University while his brother achieved Student of the Year at Lackham College in Wiltshire passing a BTEC with triple distinction in land based technology. So, as this demonstrates they both bring a wealth of knowledge to the table and we are sure they will develop the business further in the coming years.

**Now there should be no excuse for not being able to talk to a Marshall with four available to handle any enquiry - a novelty in today's world!**



# Contents

**6 - 11**



**Marshall Drop-side  
Range Steel Trailers**

**12 - 17**



**Marshall QM Range  
Monocoque Trailers**

**18 - 21**



**Marshall QMD Range  
Dumper Trailers**

**22 - 27**



**Marshall BC Range  
Pallet/Bale Trailers**

**28 - 31**



**Marshall MS Range  
Muck Spreaders**

**32 - 35**



**Marshall VES Range  
Rear-discharge  
Spreaders**

**36 - 39**



**Marshall ST Range  
Slurry Tankers**

**40 - 41**



**Marshall Livestock  
Container Range**

**42 - 43**



**Marshall FT Range  
Feed Trailers &  
FB Range Feed Barriers**

**44 - 47**



**Optional Equipment  
& Wheel Assemblies**

## Changes In This Pricelist

Price changes on our S/2, S/4 & S/5 models - Page 10

Price changes on our QM/12, QM/1200, QM/14, QM/1400, QM/16 & QM/1600 models - Page 16

Price changes on our BC/21, BC/25-10 ton & BC/32 models - Page 26

Price changes on our VES/1500, VES/2000 & VES/2500 models - Page 34

Price changes on our ST/1200, ST/1400, ST/1600, ST/1800, ST/2000, ST/2300 & ST/2550 models - Page 38

Price changes on our 21', 25', 28' & 32' fixed livestock containers - Page 41

NEW Remoulded 400 - 60R x 22.5 standard wheels on our QM/11, QM/12, QM/1200, QM/14, QM/1400, QM/16, QM/1600, QMD/12H, QMD/14H, BC/25 - 12 ton, BC/28 & BC/32 models - Page 44

NEW LED Beacon Option - Page 46

NEW Escape Hatch Option - Page 41

NEW Oil Load Sensing Option - Page 10, 16, 20 & 26

NEW Rear Ramps Option - Page 10 & 26

NEW Steering Axle Option - Page 16

NEW Large Perspex Front Window Option - Page 16

NEW 560 - 60 x 22.5 Tyre Option - Page 16

NEW 550 - 60 x 22.5 Tyre Option - Page 16

NEW Marshall Easy-connect Option - Page 38

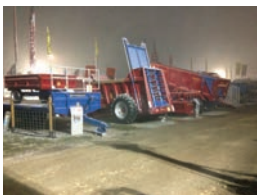
NEW Tombstone Sides Option - Page 42

NEW QMD/10 Dumper Trailer Model - Page 20

NEW Feed Barrier Range - Page 43

## Show Dates 2014

We will be attending the following shows in 2014:



**LAMMA**  
22nd - 23rd January 2014



**The Doe Show**  
4th - 6th February 2014



**The Royal North Spring Show**  
26th February 2014



**The Royal Highland Show**  
19th - 22nd June 2014



**The Royal Welsh Show**  
21st - 24th July 2014



# Quality Production. Quality Product.

## Steel

Steel is the single largest component in all our products so it is essential for it to be right. Accordingly all our steel comes from recognised UK steel companies to ensure it is consistently of a high-grade. Once it reaches our factory all the steel is stored inside to ensure it remains clean and blue. This results in cleaner welds and a better finish to our products, as well as providing the necessary strength and durability.



## CNC Controlled Machines

Investing in new plant has been part of our company policy since we started production in 1952, and we annually spend six figure sums to ensure our equipment stays up-to-date. Accordingly we now operate CNC controlled presses, plasma cutters and saws, which allows for improved designs, more efficient production methods and generally a better finished product.



## Welding

This is essentially the most important part of the production line, since our entire range is based around steel fabrication. Accordingly we utilise industrial quality welders that use pulse welding technology to improve weld penetration and reduce weld splatter. In addition to hand welders we operate a number of robot welders that provide excellent, consistent, high-quality welds.



## Shot-blasting

Since November 2011 we have shot-blasted, this is acknowledged in the paint industry as the best possible method for preparing steel for painting. The shot-blasting creates a profile for the paint to adhere to improving adhesion and in turn the protection offered to the steel.



## Painting

Our four man team of trained sprayers use the latest spraying equipment to finish our products with a dual layer paint finish. Every machine is finished with 80 microns of high-build primer and 50 microns of gloss polyurethane; this combination provides excellent protection and a high-quality finish.



# Drop-side Trailer Range



Model Shown: S/5GS - Front View



Model Shown:  
S/10SS - Rear View



Model Shown: S/5 - Mesh Sides



Model Shown: S/4 - Bale Extension & Harvest Ladders

The most versatile trailer you will ever use.

Our range of drop-side trailers can be configured to suit almost any requirement.

**Grain Sides** – Available on S/5 upwards; comes complete with a full height door to allow bulky loads to be safely discharged.

**Silage Sides** – Available on S/5 upwards; comes complete with two side loading panels and uses Marshall's unique hydraulic silage door locking system fitted to the rear of the trailer, preventing any damage from the side.

**Mesh Sides** – Available on all models; these sides simply bolt on to the trailer. They provide an increased capacity for light loads such as leaves and grass.

**Bale Extension & Harvest Ladders** – Available on S/4 upwards; the extension increases the bed lengths of our S/4, S/5 & S/6 models by 3' and our S/85 & S/10 models by 4'.





## Options, options and more options.

Every trailer in our drop-side range can be adjusted to your specification, with a number of useful options to ensure our trailers can tackle any job.

**Door Options** – every model in the range has a number of door options to ensure different loads can be safely discharged. This includes doors hinged at the top or the bottom, side opening doors or even barn doors; it is all possible.

**Lighting Options** – lights are standard on our S/4 models upwards and optional on our S/2 model. The standard light units fitted are commercial grade, and sealed to prevent water damage. In addition it is also possible to upgrade to LED lights and LED beacons are available as an option for all models.

**Tyre Options** – there are a range of tyres available for each model that provide improved floatation or better performance on the road. To find out more information about our tyre options see page 10 for the dropside specification chart and page 44 for our tyre guide.



Lights



15 - 55 x 17 Floatation Tyres





## Engineered to last.

Our entire drop-side range has been intelligently designed with a number of clever features to maximize strength and durability.

**Pressed Panel Construction** – This production technique increases strength and rigidity without adding significant weight, ensuring that the side panels can safely and easily be handled or removed.

**Fixed Headboard** – Every trailer in our drop-side range has a fixed headboard as standard. This increases torsional rigidity to reduce flexing when the trailer is being used.

**Fully-braced Hinge Points** – Our whole drop-side range uses the same hinge points, which are reinforced to stand up to the constant opening and closing action drop-side trailers have to endure.

**Fully Welded Construction** – No compromises are made in the construction of our trailers, with every model utilizing a fully welded construction. This provides two major benefits; the overall durability of the trailer is increased and there is less opportunity for water to sit and cause rust.

**Marshall Chassis Design** – Our smaller models use a fully-welded channel chassis that provides unmatched strength while keeping weight down. Our S/85 and S/10 models use a square chassis configuration to improve stability and reduce flexing when loading. In addition our S/10 model also benefits from a further strengthened chassis, which employs an 8mm thick reinforcing plate over the front of the chassis members to provide incredible rigidity.

**Model Shown:**  
S/2 Basic



**Model Shown:**  
S/85GS - Rear







## The right trailer, with the right running gear.

It is now more important than ever to make sure that trailers have the correct suspension, axles and brakes. We recognize this and accordingly we ensure all our models exceed the legal requirements for agricultural trailers, and of course we offer a number of optional extras to further improve performance if required.

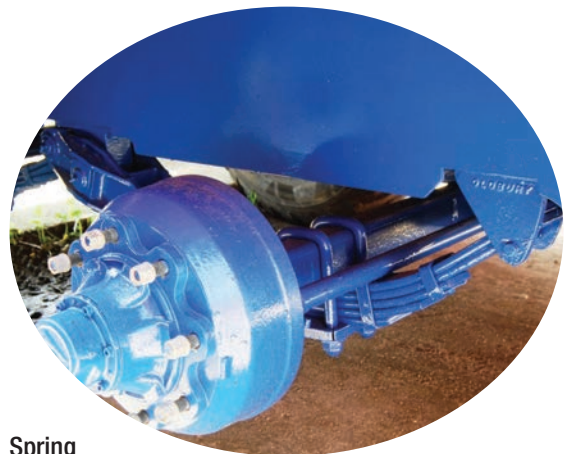
### Suspension

**Springs** – Available on our tandem axle S/85 and S/10 models as a no-cost option and on our single-axle S/4, S/5 and S/6 models as an optional extra. The benefit of spring suspension is for road-work because it handles uneven surfaces better at speed.

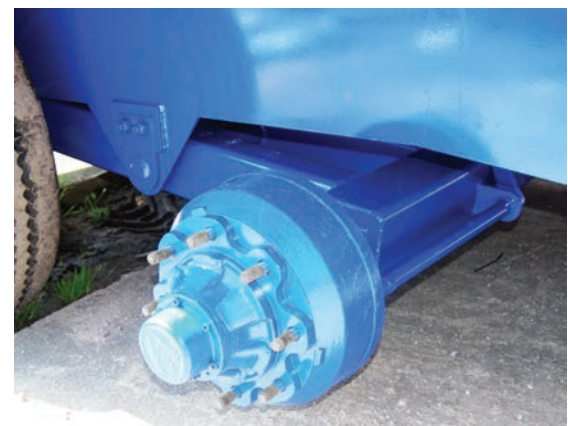
**Rocker Tandem** – Only available on our tandem axle S/85 and S/10 models as a no-cost option. This suspension set-up is excellent on steep ground or when transporting high-loads since it prevents lateral movement improving the stability of the trailer.

### Axles & Brakes

Our whole drop-side range comes complete with hydraulically operated brakes as standard; the only exception is our S/2 model, which has the option to fit hydraulic brakes. The sizes of the brakes on our drop-side range are also more than acceptable; providing braking efficiencies in excess of the current legal requirements. See our running gear guide on page 45 for more information.



**Spring  
Suspension**



**Rocker Tandem Suspension**

# Drop-side Trailer Range

## Prices, Specification and Options

	S/2	S/4	S/5	S/6	S/85	S/10
<b>Basic Price</b>	<b>£2,500</b>	<b>£3,223</b>	<b>£3,710</b>	<b>£4,588</b>	<b>£7,150</b>	<b>£9,150</b>
<b>Grain Price</b>	<b>N/A</b>	<b>N/A</b>	<b>£4,278</b>	<b>£5,217</b>	<b>£7,804</b>	<b>£9,732</b>
<b>Silage Price</b>	<b>N/A</b>	<b>N/A</b>	<b>£4,896</b>	<b>£6,080</b>	<b>£8,847</b>	<b>£10,915</b>
Body Size - Imperial	8' x 5' x 15"	10' x 6' x 18"	10' 6" x 6' 9" - 7' x 21"	12' x 6' 9" - 7' x 21"	14' x 7' 6" - 7' 9" x 24"	16' x 7' 6" - 7' 9" x 24"
Standard Tyre Size	10.0 x 12 - 10 ply	10.0 x 15 - 10 ply	11.5 x 15 - 10 ply	12.5 x 15 - 14 ply	12.5 x 15 - 14 ply	385 - 65 x 22.5
Axle	50mm 5 stud	60mm 6 stud	70mm 6 stud	70mm 6 stud	70mm 6 stud Tandem	80mm 8 stud Tandem
Brake	N/A	250 x 60	300 x 60	300 x 60	300 x 60	350 x 90
Carrying Capacity	2 tons	4 tons	5 tons	6.5 tons	8.5 tons	10.5 tons
Floor Thickness	2.5mm	3mm	3mm	4mm	4mm	4mm
Side Thickness	2.5mm	2.5mm	2.5mm	2.5mm	2.5mm	2.5mm
Lights	£150	Standard	Standard	Standard	Standard	Standard
Hyd Brakes	£135	Standard	Standard	Standard	Standard	Standard
Side Loading Panels	N/A	N/A	Standard	Standard	Standard	Standard
Volume Basic	50 cu.ft / 1.41 cu. mtrs	90 cu.ft / 2.55 cu. mtrs	128 cu.ft / 3.62 cu. mtrs	147 cu.ft / 4.16 cu. mtrs	216 cu.ft / 6.1 cu. mtrs	248 cu.ft / 7.0 cu. mtrs
Volume Grain	N/A	N/A	238 cu. ft	273 cu. ft	434 cu. ft	496 cu. ft
Volume Silage	N/A	N/A	457 cu. ft	525 cu. ft	704 cu. ft	930 cu. ft
Basic Trailer Weight	460kgs	910kgs	1007kgs	1360 kgs	2310 kgs	2746 kgs
Loading Height Basic	45" / 1.14m	52" / 1.32m	58" / 1.47m	60" / 1.52m	65" / 1.65m	71" / 1.80m
<b>OPTIONAL EQUIPMENT</b>						
26.0 x 12	£345	N/A	N/A	N/A	N/A	N/A
10.0 x 15	N/A	Standard	N/A	N/A	N/A	N/A
11.5 x 15	N/A	£68	Standard	N/A	N/A	N/A
12.5 x 15	N/A	£160	£92	Standard	Standard	N/A
340 x 65 x 18	N/A	N/A	£862	£770	£1,540	N/A
15-55 x 17	N/A	£450	£450	£340	£680	N/A
NEW 400-60 x 22.5	N/A	N/A	N/A	N/A	N/A	£788
8 inch Hatch	N/A	N/A	£118	£118	£118	£118
12 inch Hatch	N/A	N/A	N/A	N/A	£142	£142
12 inch Hatch with sock	N/A	N/A	N/A	N/A	£306	£306
Spring Drawbar	N/A	N/A	N/A	N/A	£782	£782
Bale Extension	N/A	£325	£325	£325	£375	£375
Harvest Ladders (pair)	N/A	£153	£153	£153	£153	£153
Spring for Single Axle	N/A	£360	£360	£390	N/A	N/A
Trailer Cover (640g PVC)	£170	£170	£170	£170	£180	£220
LED Beacon	£135	£135	£135	£135	£135	£135
LED Tail Lights	£301	£150	£150	£150	£150	£150
10 Stud Commercial Axle	N/A	N/A	N/A	N/A	N/A	£1,214
10 Stud Commercial Axle c/w ABS Brakes	N/A	N/A	N/A	N/A	N/A	£4,870
Air/Oil Brakes (non ABS) c/w Load Sensing	N/A	£1,150	£1,150	£1,150	£1,250	£1,250
Oil Load Sensing	N/A	£750	£750	£750	£750	£750
18" Mesh Sides	£425	£425	£475	£475	£525	£525
Rear Tow Hitch c/w Lights and Brakes	N/A	£325	£325	£325	£325	£325
Jack Screw in lieu of Skid	N/A	£85	£85	£85	N/A	N/A
Rear Ramps (Aluminium, 3m, 7.4 ton)	£1,275	£1,275	£1,275	£1,275	£1,275	£1,275



# Drop-side Range

## 10 Reasons to Choose Marshalls

We're not afraid but the competition should be! Ask our competitors the questions below, compare our specifications, compare our prices and see why Marshalls is the right choice.

	Model	Marshall	Competitor	
1	How thick is the floor?	S/2	2.5mm	
		S/4	3mm	
		S/5	3mm	
		S/6	4mm	
		S/85	4mm	
		S/10	4mm	
2	How thick are the sides?	S/2	2.5mm - Pressed Construction	
		S/4	2.5mm - Pressed Construction	
		S/5	2.5mm - Pressed Construction	
		S/6	2.5mm - Pressed Construction	
		S/85	2.5mm - Pressed Construction	
		S/10	2.5mm - Pressed Construction	
3	Are hydraulic brakes & lights standard?	S/2	Optional	
		S/4	Standard	
		S/5	Standard	
		S/6	Standard	
		S/85	Standard	
		S/10	Standard	
4	What is the trailer's unladen weight?	S/2	460kgs	
		S/4	910kgs	
		S/5	1007kgs	
		S/6	1360kgs	
		S/85	2310kgs	
		S/10	2746kgs	
5	What is the trailer's cubic capacity?	S/2	1.41 cu. mtrs	
		S/4	2.55 cu. mtrs	
		S/5	3.62 cu. mtrs	
		S/6	4.16 cu. mtrs	
		S/85	6.1 cu. mtrs	
		S/10	7 cu. mtrs	
6	What is the trailer's axle size?	S/2	50mm 5 stud Single Axle	
		S/4	60mm 6 stud Single Axle	
		S/5	70mm 6 stud Single Axle	
		S/6	70mm 6 stud Single Axle	
		S/85	70mm 6 stud Tandem Axles	
		S/10	80mm 8 stud Tandem Axles	
7	What is the trailer's brake size?	S/2	Optional	
		S/4	250 x 60	
		S/5	300 x 60	
		S/6	300 x 60	
		S/85	300 x 60	
		S/10	350 x 90	
8	Does the trailer have a tapered body?	S/2	No	
		S/4	No	
		S/5	3" Taper	
		S/6	3" Taper	
		S/85	3" Taper	
		S/10	3" Taper	
9	What style of chassis does the trailer have?	S/2	6mm Pressed Tapered Chassis Design	
		S/4	6" x 3" Channel Tapered Chassis Design	
		S/5	7" x 3" Channel Tapered Chassis Design	
		S/6	7" x 3" Channel Tapered Chassis Design	
		S/85	8" x 3" Channel Square Chassis Design	
		S/10	10" x 3.5" Channel with 8mm Reinforcing Plate	
10	What paint finish does the trailer have?	S/2	Shot-blasted, 80 Microns High-build Primer, 50 Microns Polyurethane Gloss	
		S/4	Shot-blasted, 80 Microns High-build Primer, 50 Microns Polyurethane Gloss	
		S/5	Shot-blasted, 80 Microns High-build Primer, 50 Microns Polyurethane Gloss	
		S/6	Shot-blasted, 80 Microns High-build Primer, 50 Microns Polyurethane Gloss	
		S/85	Shot-blasted, 80 Microns High-build Primer, 50 Microns Polyurethane Gloss	
		S/10	Shot-blasted, 80 Microns High-build Primer, 50 Microns Polyurethane Gloss	
	Final Score:			
	Price:			



## QM Monocoque Trailer Range



Model Shown: QM/12 Basic

## Built to perform.

Our QM range combines superior construction and clever design to create trailers that are strong, reliable and durable; the basic requirements of any good trailer.

**Body Design** – the floors of the entire range are 5mm thick and the sides are either 3.5mm or 4mm thick, ensuring an extended service life. Every model also benefits from a fully welded construction with a substantial number of floor and side bearers to improve overall rigidity and strength.

**Chassis Design** – the QM/11 model upwards uses a unique chassis design that is formed from heavy duty channels with 8mm or 10mm reinforcing plates stitch welded to the channels. This set-up provides unrivalled strength, while also allowing the chassis to flex when required; if the chassis is too rigid then it can become prone to cracking and premature failure.

**Tipping Mechanism** – the tipping points on our QM/6 and QM/8 models use a toughened 24mm bolt and on our QM/11 model upwards, a fully bushed 50mm solid steel bar is used to eliminate any potential weak link in the design. Similarly our QM/11 model upwards also benefits from twin industrial chrome rams, which are comparable to the rams used on construction excavators; this prevents any harmful corrosion and provides years of trouble free operation.



Chrome Rams



50mm Fully-bushed Tip Point





## High-performance running gear.

With ever increasing tractors speeds and heavier loads having the correct running gear has never been more important, accordingly our entire QM range is prepared to handle these challenges.

### Suspension

**Springs** – Available on all our tandem axle QM models as a no-cost option and available on our QM/6 single axle model as a priced option. Our QM/8, QM/11, QM/12 and QM/1200 models use multi-leaf springs to keep the trailer height down for improved stability, while still providing excellent road performance. On our QM/14 model upwards 4-leaf parabolic springs are utilized to handle the increased weights.

**Rocker Tandem** – Available on all our tandem axle models as a no-cost option. This suspension set-up is more stable than springs as it eliminates lateral movement, while providing a smooth ride when travelling forward. Our rocker tandems are constructed from box-section with a 50mm solid steel bar pivot, that has devion bushes and grease points to ensure an extended working life-span.

### Axles & Braking

Every model in the QM range has hydraulic brakes as standard with the option for air brakes with load sensing and ABS. There is also the option for hydraulic load sensing. Our QM/11, QM/12 & QM/1200 models use 8 stud 350 x 90 axles, with the option to upgrade to commercial axles for high-speed road work. Commercial 10 stud 420 x180 axles are standard on our QM/14 model upwards; these are the same size of axles that are used on HGVs and provide exceptional braking and high-speed performance.

### Parabolic Springs



### Rocker Tandem Suspension



### 10 Stud 420 x 180 S - Cam Commercial Axle





Model Shown: QM/1200B



Model Shown:  
QM/8SS -  
Swinging  
Tailgate  
Style Sides



Model Shown: QM/14 Basic 560/60 x 22.5 Wheels

## Designed around you.

With so many different demands placed on agricultural trailers it is now essential to offer a large range of options to ensure that our monocoque range can handle any task.

**Cereals** – our QM and QM00 range are both ideal for this type of work. The QM00 range has a marginally larger carrying capacity than the QM range with basic sides.

**Silage** – both our ranges of monocoque trailers are available with silage sides. The QM range is available with swinging tailgate style sides or silage attachment style sides; the swinging tailgate style sides allow for more capacity, while the silage attachment style sides are quicker to switch between silage and cereal set-ups. Our QM00 range is only available with silage attachment style sides.

**Rootcrop** – our QM range has 4' high sides to minimize the distance crops have to fall during loading. When specified with 560/60 x 22.5 or 550/60 x 22.5 wheels and a full width front window, our QM range is ideal for rootcrop work.

**Sugar Beet** – with high tip rams either our QM or QM00 range can handle sugar beet work. The high tip rams ensure that the load correctly discharges before the 90 degree opening hydraulic door grades the heap.





## Bespoke trailers. Just ask!

It's always possible to modify our standard ranges to meet a customer's needs, whether this is to change the physical build of the trailer or simply a different colour scheme, we can accommodate most requests.

**Build Options** – we are able to alter certain build options on our range, such as fold down sides, axle placements, increased floor thicknesses and body dimensions.

**Wheel Options** – certain tyre sizes and brands that we do not offer as a standard option can be requested.

**Paint Options** – this is another bespoke option that we are able to offer, allowing customers to specify the colour finish of their trailer. In the past colour options have included John Deere green, New Holland blue, Kubota orange, Fendt green, Claas green, white and yellow for municipal use.

**Lighting Options** – another area that we offer multiple specification options. LED lights at a high or low level are available along with dual lights and LED beacons.



Model Shown: QM/1400 Bespoke Colour and Ladder



Double LED Lights



LED Beacon



Dual Lights



Steering Axle

# QM Monocoque Trailer Range

## Prices, Specification and Options

	QM/6	QM/8	QM/11	QM/12	QM/1200	QM/14	QM/1400	QM/16	QM/1600
<b>Basic Price</b>	<b>£5,711</b>	<b>£8,250</b>	<b>£10,820</b>	<b>£12,552</b>	<b>£12,552</b>	<b>£15,250</b>	<b>£15,250</b>	<b>£16,100</b>	<b>£16,100</b>
<b>Silage Price</b>	<b>£6,775</b>	<b>£9,450</b>	<b>£12,358</b>	<b>£14,200</b>	<b>£14,200</b>	<b>£17,380</b>	<b>£17,380</b>	<b>£18,223</b>	<b>£18,223</b>
Body Size - Imperial	12' x 7' 3" - 7' 6" x 4'	14' x 7' 3" - 7' 6" x 4'	16' x 7' 9" - 8' x 4'	18' x 7' 9" - 8' x 4'	16' x 7' 9" - 8' x 4' 8"	21' x 7' 9" - 8' x 4'	18' x 7' 9" - 8' x 4' 8"	24' x 7' 9" - 8' x 4'	21' x 7' 9" - 8' x 4' 8"
Standard Tyre Size	12.5 x 15	12.5 x 15	400 - 60R x 22.5	400 - 60R x 22.5	400 - 60R x 22.5	400 - 60R x 22.5	400 - 60R x 22.5	400 - 60R x 22.5	400 - 60R x 22.5
Axle	6 Stud 70mm	6 Stud 70mm	8 Stud 80mm	8 Stud 80mm	8 Stud 80mm	10 Stud 127mm High Speed Commercial	10 Stud 127mm High Speed Commercial	10 Stud 127mm High Speed Commercial	10 Stud 127mm High Speed Commercial
Brake	300 x 60	300 x 60	350 x 90	350 x 90	350 x 90	420 x 180 S Cam	420 x 180 S Cam	420 x 180 S Cam	420 x 180 S Cam
Carrying Capacity	6.5 tons	8.5 tons	11 tons	12 tons	12 tons	14.5 tons	14.5 tons	16.5 tons	16.5 tons
Floor Thickness	5mm	5mm	5mm	5mm	5mm	5mm	5mm	5mm	5mm
Side Thickness	3.5mm	3.5mm	3.5mm	4mm	4mm	4mm	4mm	4mm	4mm
Lights and Hyd Brakes	Standard	Standard	Standard	Standard	Standard	Standard	Standard	Standard	Standard
Side Loading Panels	Standard	Standard	Standard	Standard	Standard	Standard	Standard	Standard	Standard
Volume Basic	360 cu.ft / 10.2 cu. mtrs	420 cu.ft / 11.9 cu. mtrs	512 cu.ft / 14.5 cu. mtrs	576 cu.ft / 16.3 cu. mtrs	597 cu.ft / 16.9 cu. mtrs	672 cu.ft / 19 cu. mtrs	672 cu.ft / 19 cu. mtrs	768 cu.ft / 21.7 cu. mtrs	784 cu.ft / 22.2 cu. mtrs
Volume Silage - Swinging Door Style Sides	720 cu.ft / 20.4 cu. mtrs	840 cu.ft / 23.8 cu. mtrs	1024 cu.ft / 29 cu. mtrs	1152 cu.ft / 32.6 cu. mtrs	N/A	1344 cu. ft / 38 cu. mtrs	N/A	1536 cu. ft / 43.4 cu. mtrs	N/A
Volume Silage - Hyd Door Attach. Style Sides	609 cu.ft / 17.2 cu. mtrs	710 cu.ft / 20.1 cu. mtrs	865 cu.ft / 24.5 cu. mtrs	973 cu.ft / 27.5 cu. mtrs	1013 cu.ft / 28.7 cu. mtrs	1135 cu.ft / 32.1 cu. mtrs	1140 cu.ft / 32.3 cu. mtrs	1298 cu.ft / 36.7 cu. mtrs	1330 cu.ft / 37.6 cu. mtrs
Basic Trailer Weight	1680 kgs	2260 kgs	3740 kgs	3960 kgs	3980 kgs	4980 kgs	5010 kgs	5590 kgs	5640 kgs
Loading Height Basic	83"/2.11m	89"/2.26m	95"/2.41m	96"/2.44m	104"/2.64m	96"/2.44m	104"/2.64m	98"/2.49m	106"/2.69m
Tip Angle (Degrees)	50°	45°	46°	49°	49°	50°	50°	51°	51°
<b>OPTIONAL EQUIPMENT</b>									
15-55 x 17	£340	£680	N/A	N/A	N/A	N/A	N/A	N/A	N/A
340 x 65 x 18 Radial	£770	£1,540	N/A	N/A	N/A	N/A	N/A	N/A	N/A
NEW 400-60 x 22.5	N/A	N/A	£788	£788	£788	£788	£788	£788	£788
550-45 x 22.5	N/A	N/A	£2,205	£2,205	£2,205	£1,840	£1,840	Not recommended	Not recommended
560-45 x 22.5	N/A	N/A	£2,845	£2,845	£2,845	£2,480	£2,480	£2,480	£2,480
550-60 x 22.5	N/A	N/A	N/A	N/A	N/A	£2,750	£2,750	£2,750	£2,750
560-60 x 22.5	N/A	N/A	N/A	N/A	N/A	£3,280	£3,280	£3,280	£3,280
Mud Guards / Wings	N/A	£365	£365	£365	£365	Standard	Standard	Standard	Standard
8 inch Hatch	£118	£118	£118	£118	£118	£118	£118	£118	£118
12 inch Hatch	£142	£142	£142	£142	£142	£142	£142	£142	£142
12 inch Hatch with sock	£306	£306	£306	£306	£306	£306	£306	£306	£306
Spring Drawbar	N/A	£782	Standard	Standard	Standard	Standard	Standard	Standard	Standard
Hyd Door Safety Valve	£160	£160	£160	£160	£160	£160	£160	£160	£160
Hyd Up & Over Grain Door	£983	£983	£983	Standard	Standard	Standard	Standard	Standard	Standard
Hyd Grain Door c/w Silage Attachments	Standard - When Hyd Grain Door and Silage Sides Specified	Standard - When Hyd Grain Door and Silage Sides Specified	Standard - When Hyd Grain Door and Silage Sides Specified	Standard - When Silage Sides Specified	Standard - When Silage Sides Specified	Standard - When Silage Sides Specified	Standard - When Silage Sides Specified	Standard - When Silage Sides Specified	Standard - When Silage Sides Specified
Swinging Door Style Silage Sides	Standard - When Hyd Grain Door Not Specified	Standard - When Hyd Grain Door Not Specified	Standard - When Hyd Grain Door Not Specified	No-cost Option	N/A	No-cost Option	N/A	No-cost Option	N/A
Trailer Cover (640g PVC)	£170	£180	£220	£240	£240	£260	£260	£260	£260
Roll Over Cover (1000g PVC)	£1,275	£1,275	£1,275	£1,275	£1,275	£1,275	£1,275	£1,275	£1,275
LED Beacon	£135	£135	£135	£135	£135	Standard	Standard	Standard	Standard
LED Tail Lights	£150	£150	£150	£150	£150	£150	£150	£150	£150
10 Stud 406 x 120 Commercial Axle	N/A	N/A	£1,214	£1,214	£1,214	N/A	N/A	N/A	N/A
10 Stud Commercial Axle c/w ABS Brakes	N/A	N/A	£4,870	£4,870	£4,870	£3,358	£3,358	£3,358	£3,358
Rear Steering Axle	N/A	N/A	N/A	N/A	N/A	£3,650	£3,650	£3,650	£3,650
Air / Oil Brakes (non ABS) c/w Load Sensing	£1,150	£1,250	£1,250	£1,250	£1,250	£1,250	£1,250	£1,250	£1,250
Oil Load Sensing	£750	£750	£750	£750	£750	£750	£750	£750	£750
Small Perspex Front Window	£125	£125	£125	£125	£125	£100	£100	£100	£100
Large Perspex Front Window	N/A	N/A	£595	£595	£595	£595	£595	£595	£595
Rear Tow Hitch c/w Lights and Brakes	N/A	£325	£325	£325	£325	£325	£325	£325	£325



# QM Monocoque Range - Reasons to Choose Marshalls

We're not afraid but the competition should be! Ask our competitors the questions below, compare our specifications, compare our prices and see why Marshalls is the right choice.

	Model	Marshall	Competitor	
1	How thick is the floor?	QM/6	5mm	
		QM/8	5mm	
		QM/11	5mm	
		QM/12	5mm	
		QM/1200	5mm	
		QM/14	5mm	
		QM/1400	5mm	
		QM/1600	5mm	
2	How thick are the sides?	QM/6	3.5mm	
		QM/8	3.5mm	
		QM/11	3.5mm	
		QM/12	4mm	
		QM/1200	4mm	
		QM/14	4mm	
		QM/1400	4mm	
		QM/1600	4mm	
3	What is the trailer's cubic capacity?	QM/6	Basic - 10.2 cu. mtrs Silage (Hyd Door Attachments) - 17.2 cu. mtrs Silage (Swinging Door) - 20.4 cu. mtrs	
		QM/8	Basic - 11.9 cu. mtrs Silage (Hyd Door Attachments) - 20.1 cu. mtrs Silage (Swinging Door) - 23.8 cu. mtrs	
		QM/11	Basic - 14.5 cu. mtrs Silage (Hyd Door Attachments) - 24.5 cu. mtrs Silage (Swinging Door) - 29 cu. mtrs	
		QM/12	Basic - 16.3 cu. mtrs Silage (Hyd Door Attachments) - 27.5 cu. mtrs Silage (Swinging Door) - 32.6 cu. mtrs	
		QM/1200	Basic - 16.9 cu. mtrs Silage (Hyd Door Attachments) - 28.7 cu. mtrs	
		QM/14	Basic - 19 cu. mtrs Silage (Hyd Door Attachments) - 32.1 cu. mtrs Silage (Swinging Door) - 38 cu. mtrs	
		QM/1400	Basic - 19 cu. mtrs Silage (Hyd Door Attachments) - 32.3 cu. mtrs	
		QM/1600	Basic - 21.7 cu. mtrs Silage (Hyd Door Attachments) - 36.7 cu. mtrs Silage (Swinging Door) - 43.4 cu. mtrs	
4	What is the trailer's axle size?	QM/6	6 stud 70mm 300 x 60 S/A	
		QM/8	6 stud 70mm 300 x 60	
		QM/11	8 stud 80mm 350 x 90	
		QM/12	8 stud 80mm 350 x 90	
		QM/1200	8 stud 80mm 350 x 90	
		QM/14	10 stud 127mm 420 x 180 S Cam	
		QM/1400	10 stud 127mm 420 x 180 S Cam	
		QM/1600	10 stud 127mm 420 x 180 S Cam	
5	What is the trailer's unladen weight?	QM/6	1680kgs	
		QM/8	2260kgs	
		QM/11	3740kgs	
		QM/12	3960kgs	
		QM/1200	3960kgs	
		QM/14	4980kgs	
		QM/1400	5010kgs	
		QM/1600	5590kgs	
6	How many side bearers does the trailer have?	QM/6	3	
		QM/8	3	
		QM/11	3	
		QM/12	5	
		QM/1200	3	
		QM/14	7	
		QM/1400	7	
		QM/1600	7	
7	Does the trailer have chrome rams?	QM/6	Single Black Ram	
		QM/8	Twin Black Rams	
		QM/11	Twin Industrial Chrome Rams	
		QM/12	Twin Industrial Chrome Rams	
		QM/1200	Twin Industrial Chrome Rams	
		QM/14	Twin Industrial Chrome Rams	
		QM/1400	Twin Industrial Chrome Rams	
		QM/1600	Twin Industrial Chrome Rams	
8	How strong is the trailer chassis?	QM/6	7" x 3" Channel Square Chassis Design	
		QM/8	8" x 3" Channel Square Chassis Design	
		QM/11	10" x 3.5" Channel With 8mm Reinforcing Plate - Provides unmatched strength and durability	
		QM/12	10" x 3.5" Channel With 8mm Reinforcing Plate - Provides unmatched strength and durability	
		QM/1200	10" x 3.5" Channel With 8mm Reinforcing Plate - Provides unmatched strength and durability	
		QM/14	10" x 3.5" Channel With 8mm Reinforcing Plate - Provides unmatched strength and durability	
		QM/1400	10" x 3.5" Channel With 8mm Reinforcing Plate - Provides unmatched strength and durability	
		QM/1600	10" x 3.5" Channel With 10mm Reinforcing Plate - Provides unmatched strength and durability	
9	What size is the trailer's tipping points?	QM/6	M24 x 180 High Tensile Bolt	
		QM/8	M24 x 180 High Tensile Bolt	
		QM/11	50mm Solid Steel Bar - Complete With Bushes & Grease Points	
		QM/12	50mm Solid Steel Bar - Complete With Bushes & Grease Points	
		QM/1200	50mm Solid Steel Bar - Complete With Bushes & Grease Points	
		QM/14	50mm Solid Steel Bar - Complete With Bushes & Grease Points	
		QM/1400	50mm Solid Steel Bar - Complete With Bushes & Grease Points	
		QM/1600	50mm Solid Steel Bar - Complete With Bushes & Grease Points	
10	What paint finish does the trailer have?	QM/6	Shot-blasted, 80 Microns High-build Primer, 50 Microns Polyurethane Gloss	
		QM/8	Shot-blasted, 80 Microns High-build Primer, 50 Microns Polyurethane Gloss	
		QM/11	Shot-blasted, 80 Microns High-build Primer, 50 Microns Polyurethane Gloss	
		QM/12	Shot-blasted, 80 Microns High-build Primer, 50 Microns Polyurethane Gloss	
		QM/1200	Shot-blasted, 80 Microns High-build Primer, 50 Microns Polyurethane Gloss	
		QM/14	Shot-blasted, 80 Microns High-build Primer, 50 Microns Polyurethane Gloss	
		QM/1400	Shot-blasted, 80 Microns High-build Primer, 50 Microns Polyurethane Gloss	
		QM/1600	Shot-blasted, 80 Microns High-build Primer, 50 Microns Polyurethane Gloss	
	<b>Final Score:</b>			
	<b>Price:</b>			

## QMD Dumper Trailer Range

### Ready for rocks and rubble.

The QMD range has been designed to handle the punishing jobs that a normal trailer could not cope with. This is only possible due to the robust design and heavy-duty construction across the range.

**Body Design** – the floor of our QMD/6 model is 6mm thick, with the rest of the models in the range benefiting from an 8mm rock floor. The QMD/6 and QMD/8 models both have 5mm sides, with larger models being fitted with 6mm sides. Overall rigidity and strength is maintained throughout the range with reinforced floors and sides supported by numerous strengthening bearers. Note the exceptional amount of floor bearers in the above photo.

**Chassis Design** – the QMD range uses a similar chassis design to our QM range, but with a wider base for better stability. The chassis is formed from heavy duty channels with 8mm or 10mm reinforcing plates stitch welded to the channel. This set-up provides unrivalled strength, while also allowing the chassis to flex when required; if the chassis is too rigid then it can become prone to cracking and premature failure.

**Tipping Mechanism** – the tipping points on our QMD/6 and QMD/8 models use a high tensile 24mm bolt and on our QMD/10 model upwards a fully bushed 50mm solid steel bar is used to eliminate any potential weak link in the design. Similarly our QMD/10 and QMD/14H models also benefit from twin industrial chrome rams, which are comparable to the rams used on construction excavators; this prevents any harmful corrosion.

Model Shown:  
QMD/6 - Tipped



Model Shown: QMD/8







## Stable suspension and robust running gear.

**Suspension** – our tandem axle models all come as standard with split-oscillating suspension, which eliminates lateral movement. This combined with our extra-wide chassis on our QMD/12H and QMD/14H ensures maximum stability when tipping. Springs are available as a no-cost option if preferred.

**Axle & Brakes** – the standard axles and hydraulic brakes on all models exceed the current legal legislation on braking efficiency. However commercial 10 stud 406x120 axles are available for our QMD/10, QMD/12H and QMD/14H to provide increased braking efficiency. Air brakes and ABS are also available.

**Tyres** – the standard tyres on our QMD/6 and QMD/8 models are 12.5 x 15 floatation tyres, which can be upgraded to 340 x 65 x 18 radial tyres for road work. The larger models in the range, QMD/10 upwards, are equipped with 400/60 x 22.5 radial tyres, ideal for road work. These can be swapped for floatation tyres as an optional extra.



Model Shown: QMD/14H T4U



Model Shown: QMD/10

# QMD Dumper Trailer Range

## Prices, Specification and Options

	QMD/6	QMD/8	QMD/10	QMD/12H	QMD/14H
<b>Price</b>	<b>£5,325</b>	<b>£8,686</b>	<b>£10,820</b>	<b>£9,820</b>	<b>£10,884</b>
Body Size	(Shallow Sides) 11' 6" x 6' 6" x 21"	(Shallow Sides) 14' x 7' x 2'	(Shallow Sides) 16' x 7' x 2' 6"	(High Sides) 12' x 5' 3" x 3' 6"	(High Sides) 14' x 5' 3" x 3' 6"
Standard Tyre Size	12.5 x 15 - 14 ply	12.5 x 15 - 14 ply	400 - 60R x 22.5	400 - 60R x 22.5	400 - 60R x 22.5
Axle	70mm 6 stud	70mm 6 stud	80mm 8 stud	80mm 8 stud	80mm 8 stud
Brake	300 x 60	300 x 60	350 x 90	350 x 90	350 x 90
Carrying Capacity	6 tons	8 tons	10 tons	12 tons	14 tons
Floor Thickness (Rock)	6mm	8mm	8mm	8mm	8mm
Side Thickness	5mm	5mm	6mm	6mm	6mm
Lights and Hyd Brakes	Standard	Standard	Standard	Standard	Standard
Volume Basic	130 cu.ft / 3.7 cu. mtrs	195 cu.ft / 5.5 cu. mtrs	280 cu.ft / 7.9 cu. mtrs	195 cu.ft / 5.5 cu. mtrs	228 cu.ft / 6.5 cu. mtrs
Basic Trailer Weight	1660 kgs	2475 kgs	3140 kgs	3634 kgs	4240 kgs
Loading Height	60"	65"	77"	87"	87"
Hydraulic Tail Door	N/A	N/A	N/A	Standard	Standard
Tip Angle (Degrees)	50°	45°	64°	64°	64°
<b>OPTIONAL EQUIPMENT</b>					
15-55 x 17	£340	£680	N/A	N/A	N/A
340 x 65 x 18 Radial	£770	£1,540	N/A	N/A	N/A
NEW 400-60 x 22.5	N/A	N/A	£788	£788	£788
Spring Drawbar	N/A	£782	£782	Standard	Standard
Hyd Door Safety Valve	£160	£160	£160	£160	£160
Trailer Cover (640g PVC)	£170	£180	£240	£240	£240
LED Beacon	£135	£135	£135	£135	£135
LED Tail Lights	£150	£150	£150	£150	£150
10 Stud Commercial Axle	N/A	N/A	£1,214	£1,214	£1,214
10 Stud Commercial Axle c/w ABS Brakes	N/A	N/A	£4,870	£4,870	£4,870
Air / Oil Brakes c/w Load Sensing	£1,150	£1,250	£1,250	£1,250	£1,250
Oil Load Sensing	£750	£750	£750	£750	£750
Rear Tow Hitch c/w Lights and Brakes	N/A	£325	£325	£325	£325



Model Shown: QMD/6



# QMD Dumper Range



## Reasons to Choose Marshalls

We're not afraid but the competition should be! Ask our competitors the questions below, compare our specifications, compare our prices and see why Marshalls is the right choice.

		Model	Marshall	Competitor
1	How thick is the floor?	QMD/6	6mm	
		QMD/8	8mm	
		QMD/10	8mm	
		QMD/12H	8mm	
		QMD/14H	8mm	
2	How thick are the sides?	QMD/6	5mm	
		QMD/8	5mm	
		QMD/10	6mm	
		QMD/12H	6mm	
		QMD/14H	6mm	
3	How strong is the trailer chassis?	QMD/6	7" x 3" Channel Tapered Chassis Design	
		QMD/8	8" x 3" Channel Square Chassis Design	
		QMD/10	10" x 3.5" Channel With 8mm Reinforcing Plate - Provides unmatched strength and durability	
		QMD/12H	10" x 3.5" Channel With 8mm Reinforcing Plate - Provides unmatched strength and durability	
		QMD/14H	10" x 3.5" Channel With 8mm Reinforcing Plate - Provides unmatched strength and durability	
4	What is the trailer's unladen weight?	QMD/6	1660kgs	
		QMD/8	2475kgs	
		QMD/10	3140kgs	
		QMD/12H	3634kgs	
		QMD/14H	4240kgs	
5	What is the trailer's axle size?	QMD/6	6 stud 70mm 300 x 60 S/A	
		QMD/8	6 stud 70mm 300 x 60	
		QMD/10	8 stud 80mm 350 x 90	
		QMD/12H	8 stud 80mm 350 x 90	
		QMD/14H	8 stud 80mm 350 x 90	
6	What size is the trailer's tipping point?	QMD/6	M24 x 180 High Tensile Bolt	
		QMD/8	M24 x 180 High Tensile Bolt	
		QMD/10	Elevated 50mm Solid Steel Bar - Complete With Devlon Bushes & Grease Points	
		QMD/12H	Elevated 50mm Solid Steel Bar - Complete With Devlon Bushes & Grease Points	
		QMD/14H	Elevated 50mm Solid Steel Bar - Complete With Devlon Bushes & Grease Points	
7	Does the trailer have chrome rams?	QMD/6	Single Black Ram	
		QMD/8	Twin Black Rams	
		QMD/10	Twin Industrial Chrome Rams	
		QMD/12H	Twin Black Rams	
		QMD/14H	Twin Industrial Chrome Rams	
8	Is a spring drawbar standard?	QMD/6	No	
		QMD/8	Optional	
		QMD/10	Optional	
		QMD/12H	Yes	
		QMD/14H	Yes	
9	Is a hydraulic door standard?	QMD/6	No	
		QMD/8	No	
		QMD/10	No	
		QMD/12H	Yes	
		QMD/14H	Yes	
10	Does the trailer have split-oscillating suspension?	QMD/6	No	
		QMD/8	Yes - provides unmatched lateral stability when tipping	
		QMD/10	Yes - provides unmatched lateral stability when tipping	
		QMD/12H	Yes - provides unmatched lateral stability when tipping	
		QMD/14H	Yes - provides unmatched lateral stability when tipping	
		<b>Final Score:</b>		
		<b>Price:</b>		



## BC Pallet/Bale Trailer Range



Model Shown: BC/25 - 10 Ton

### Strong as standard.

The basic construction methods and materials used in our BC range ensures that every model conforms to the heavy-duty build standard of all Marshall products.

**Chassis Design** – every model benefits from heavy-duty channels to form a square chassis design that improves rigidity and reduces flexing during loading.

**Bed Design** – the entire range has a no-cost option of 30mm treated pine floors or non-slip chequered plate steel floors. The side runners and floor bearers are constructed from box-section to improve strength and remove any places where water could sit.

**21" Fixed Headboard** – standard on all models, except our BC/18, this also dramatically increases the rigidity of the trailer.



Model Shown: BC/28 - 14 Ton





## The finishing touches.

It is the small details of the Marshall BC range that set it apart from the competition, with numerous features that make our trailers simple to use and most importantly, extremely practical.

**Harvest Ladders** – standard front and rear ladders on all models, with a galvanized finish to provide effective protection. The rear ladders on all models are available in straight or angled versions as a no-cost option.

**Rope Hooks** – every model has heavy duty 5/8" rope hooks along each side and at both the front and the back for efficient and safe strapping down of loads.

**Commercial Grade Light Units** – every model has sealed commercial quality light units that are recessed into the back rail of the trailer to improve protection. LED front marker lights are also a standard feature on all models.

**Rear Crash Barrier** – standard on all models the crash barrier is formed from box section and can be folded away or removed if preferable.

**Rear Toolbox** – this simple toolbox is recessed into the back rail of our trailers to ensure it is protected. Standard on our BC/28 and BC/32 models and an option on our smaller models.



Model Shown: BC/18



Recessed Lights, Rear Crash Barrier and Toolbox



5/8" Diameter Rope Hooks





340 - 65 x 18 "Miniature Super-singles"



550 - 45 x 22.5 Floatations

## Suspension, axles, brakes and tyres matched to the model.

We recognise that the correct suspension, axles, brakes and tyres are vital aspects of any new trailer. Accordingly our standard setup exceeds current legislation, and there are a huge range of optional upgrades available.

**Suspension** – the normal suspension offered on our bale trailer range is our split-oscillating suspension, which reduces lateral movement and improves stability of high loads. Spring suspension, if preferred, is also available for high-speed road work as a no-cost option.

**Axles & Brakes** – the standard axles on all our models are more than adequate for most jobs. However commercial 10 stud axles can be specified to provide high-speed performance and enhanced braking.

**Tyres** – it is possible to upgrade the tyres of our entire BC range to better handle different jobs. Tyres available include miniature super singles, low and wide 445-45 x 19.5 tyres to reduce the bed height and a variety of floatation tyres. Study the specification chart on page 26 to see the available tyre options for each model. Further information on tyre performance is available on page 44.





## More than just a bale trailer.

With a number of options, our BC range can be used for more than simply moving bales or boxes.

**Timber Floor** – this traditional no-cost option can easily be repaired if damaged and can be renewed to a new condition when worn out. This choice of bed is also better when moving steel tracked machines.

**Ramps** – optional ramp bars can be fitted to the rear back rail of the trailer, and aluminium ramps can be supplied as an option. This set-up allows machines to be loaded and transported without the need for a dedicated low-loader trailer while still leaving the long, low flat floor that is required for a bale trailer. Ask yourself how often do you need to move machines and how often you need a bale trailer; you will find this option provides excellent value for both jobs.

**Side Panels** – another useful option that improves the versatility of a standard bale trailer. The sides fold down to allow for easy loading and can be removed to allow bales to be transported.

**Side Posts** – these posts are perfect for transporting pipes or other similar types of loads. The posts can be fixed or removable, the choice is yours.

Model Shown:  
BC/21 - Timber



Model Shown: BC/18 - Side Panels

# BC Pallet/Bale Trailer Range

## Prices, Specification and Options

	BC/18	BC/21	BC/25 - 10 ton	BC/25 - 12 ton	BC/28	BC/32
<b>Price</b>	<b>£4,510</b>	<b>£5,845</b>	<b>£6,290</b>	<b>£8,100</b>	<b>£9,265</b>	<b>£10,400</b>
Body Size	18' x 7' 6" / 5.48m x 2.28m	21' x 8' / 6.40m x 2.43m	25' x 8' / 7.62m x 2.43m	25' x 8' / 7.62m x 2.43m	28' x 8' / 8.53m x 2.43m	32' x 8' / 9.75m x 2.43m
Standard Tyre Size	12.5 x 15 - 14 ply	11.5 x 15 - 10 ply	12.5 x 15 - 14 ply	400 - 60R x 22.5	400 - 60R x 22.5	400 - 60R x 22.5
Axle	70mm 6 stud	70mm 6 stud	70mm 6 stud	80mm 8 stud	80mm 8 stud	80mm 8 stud
Brakes	300 x 60	300 x 60	300 x 60	350 x 90	350 x 90	350 x 90
Carrying Capacity	5 tons	8 tons	10 tons	12 tons	14 tons	14 tons
Floor Thickness (Steel) Durabar	3mm	4mm	4mm	4mm	4mm	4mm
Lights and Hyd Brakes	Standard	Standard	Standard	Standard	Standard	Standard
Headboard	£185	Standard - 21"	Standard - 21"	Standard - 21"	Standard - 21"	Standard - 21"
Harvest Ladders - Galvanized	Front and Rear Standard	Front and Rear Standard	Front and Rear Standard	Front and Rear Standard	Front and Rear Standard	Front and Rear Standard
Unladen Weight	1370 kgs	1800 kgs	2100 kgs	2330 kgs	2860 kgs	2910 kgs
Loading Height	36"	38"	39"	47"	47"	47"
Chassis Members	180mm PFC	200mm PFC	200mm PFC	UPN 260mm	UPN 260mm	UPN 300mm
<b>OPTIONAL EQUIPMENT</b>						
12.5 x 15	Standard	£184	Standard	N/A	N/A	N/A
15-55 x 17	£340	£680	£680	N/A	N/A	N/A
340 x 65 x 18 (Radial)	£770	£1,640	£1,540	N/A	N/A	N/A
445-45 x 19.5 (Lowers bed height by 150mm)	N/A	N/A	N/A	£1,160	£1,160	£1,160
NEW 400-60 x 22.5	N/A	N/A	N/A	£788	£788	£788
550-45 x 22.5	N/A	N/A	N/A	£1,840	£1,840	£1,840
560-45 x 22.5	N/A	N/A	N/A	£2,480	£2,480	£2,480
Spring Drawbar	N/A	£782	£782	£782	Standard	Standard
LED Beacon	£135	£135	£135	£135	£135	£135
Rear Toolbox	£88	£88	£88	£88	Standard	Standard
Extra Harvest Ladder	£173	£173	£173	£173	£173	£173
LED Tail Light	£150	£150	£150	£150	£150	£150
10 Stud Commercial Axle 406 x 120	N/A	N/A	N/A	£1,214	£1,214	£1,214
10 Stud Commercial Axle c/w ABS Brakes	N/A	N/A	N/A	£4,870	£4,870	£4,870
Air / Oil Brakes c/w Load Sensing	£1,150	£1,250	£1,250	£1,250	£1,250	£1,250
Oil Load Sensing	£750	£750	£750	£750	£750	£750
Rear Box Pusher	N/A	£425	£425	£425	£425	£425
Hydraulic Side Walkway (per side)	N/A	£975	£975	£975	£975	£975
18" Side Posts	£275	£275	£325	£325	£375	£375
Rear Tow Hitch c/w Lights and Brakes	N/A	£325	£325	£325	£325	£325
Rear Ramps (Aluminium, 3m, 7.4 ton)	£1,350	£1,350	£1,350	£1,350	£1,350	£1,350



Model Shown: BC/32 - 560-45 x 22.5 Wheels



# BC Pallet/Bale Trailer Range



## Reasons to Choose Marshalls

We're not afraid but the competition should be! Ask our competitors the questions below, compare our specifications, compare our prices and see why Marshalls is the right choice.

	Model	Marshall	Competitor
<b>1</b> Does the trailer have a chequered plate floor as standard?	BC/18	Yes - 3mm Thickness; 30mm Treated Pine-no-cost option	
	BC/21	Yes - 4mm Thickness; 30mm Treated Pine-no-cost option	
	BC/25 - 10 ton	Yes - 4mm Thickness; 30mm Treated Pine-no-cost option	
	BC/25 - 12 ton	Yes - 4mm Thickness; 30mm Treated Pine-no-cost option	
	BC/28	Yes - 4mm Thickness; 30mm Treated Pine-no-cost option	
	BC/32	Yes - 4mm Thickness; 30mm Treated Pine-no-cost option	
<b>2</b> Does the trailer have a fixed headboard as standard?	BC/18	No	
	BC/21	Yes - 21" Fixed Rigid Headboard	
	BC/25 - 10 ton	Yes - 21" Fixed Rigid Headboard	
	BC/25 - 12 ton	Yes - 21" Fixed Rigid Headboard	
	BC/28	Yes - 21" Fixed Rigid Headboard	
	BC/32	Yes - 21" Fixed Rigid Headboard	
<b>3</b> Does the trailer have box section bearers and runners?	BC/18	Yes	
	BC/21	Yes	
	BC/25 - 10 ton	Yes	
	BC/25 - 12 ton	Yes	
	BC/28	Yes	
	BC/32	Yes	
<b>4</b> Does the trailer have harvest ladders as standard?	BC/18	Yes - Front and Rear Galvanized	
	BC/21	Yes - Front and Rear Galvanized	
	BC/25 - 10 ton	Yes - Front and Rear Galvanized	
	BC/25 - 12 ton	Yes - Front and Rear Galvanized	
	BC/28	Yes - Front and Rear Galvanized	
	BC/32	Yes - Front and Rear Galvanized	
<b>5</b> Does the trailer have a square chassis design?	BC/18	Yes - 180mm PFC	
	BC/21	Yes - 200mm PFC	
	BC/25 - 10 ton	Yes - 200mm PFC	
	BC/25 - 12 ton	Yes - UPN 260mm	
	BC/28	Yes - UPN 260mm	
	BC/32	Yes - UPN 300mm	
<b>6</b> Does the trailer have split-oscillating suspension?	BC/18	No	
	BC/21	Standard - Springs No-cost Option	
	BC/25 - 10 ton	Standard - Springs No-cost Option	
	BC/25 - 12 ton	Standard - Springs No-cost Option	
	BC/28	Standard - Springs No-cost Option	
	BC/32	Standard - Springs No-cost Option	
<b>7</b> What size of axle does the trailer have?	BC/18	6 stud 70mm 300 x 60 S/A	
	BC/21	6 stud 70mm 300 x 60	
	BC/25 - 10 ton	6 stud 70mm 300 x 60	
	BC/25 - 12 ton	8 stud 80mm 350 x 90	
	BC/28	8 stud 80mm 350 x 90	
	BC/32	8 stud 80mm 350 x 90	
<b>8</b> What is the trailer's unladen weight?	BC/18	1370 kgs	
	BC/21	1800 kgs	
	BC/25 - 10 ton	2100 kgs	
	BC/25 - 12 ton	2330 kgs	
	BC/28	2860 kgs	
	BC/32	2910 kgs	
<b>9</b> Does the trailer have hydraulic brakes and lights as standard?	BC/18	Yes	
	BC/21	Yes	
	BC/25 - 10 ton	Yes	
	BC/25 - 12 ton	Yes	
	BC/28	Yes	
	BC/32	Yes	
<b>10</b> Does the trailer have a spring drawbar as standard?	BC/18	No	
	BC/21	Optional	
	BC/25 - 10 ton	Optional	
	BC/25 - 12 ton	Optional	
	BC/28	Yes	
	BC/32	Yes	
	<b>Final Score:</b>		
	<b>Price:</b>		



## MS Muck Spreader Range



**Model Shown: MS/75**  
400 - 60R x 22.5 Wheels



**Model Shown: MS/60 - Galvanized**



**Recessed  
Lights**

### The strength and design to last.

Our legendary MS range has been developed over thirty years of producing muck spreaders; with a number of unique design features and durable construction the MS range continues to be the industry leading spreader.

**Barrel Design** – the barrels on all models are fully welded and are either 4mm thick on our MS/45, MS/60 and MS/75 models or 4.5mm thick on our larger models. The ends on all models are also heavy-duty with 6mm thick ends to provide an excellent service life.

**Chassis Design** – an integral chassis design has been part of the Marshall spreader for over thirty years. It removes any stress on the barrel of the spreader to prevent premature fatigue or cracking.

**Lid Design** – every model in the range benefits from a stainless steel lid ram to eliminate corrosion. Our lids open to 89°, allowing easy loading and reducing the possibility of damage.

**Brakes & Lights** – brakes and lights come as standard on all models, except our MS/45. This ensures all our spreaders comply with both highway and health & safety regulations.





## The ultimate spread.

The entire MS range is designed around providing the most efficient and effective discharge of material on a consistent basis. Accordingly the entire spreading mechanics of every model has been tried, tested and engineered to achieve this.

**Sprockets** – all sprockets are machined steel, not cast, and located by a 10 pitch spline to maximize service life. In addition the gearing of the sprockets on all of our spreaders has been selected to provide the optimum spread.

**Bearings** – we only use plumber block bearings, which allows all our bearings to be placed away from corrosive slurry to limit potential damage.

**Rotor Shaft** – every model benefits from a round perfectly balanced rotor shaft with chains mounted on four sides, any engineer would agree a round shaft is easier to balance. Heavy-duty starter flails allow the spreader to easily start and quickly achieve the optimum spreading speed.

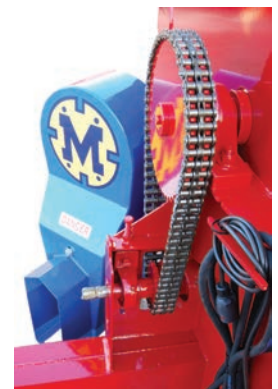
**Chains** – the chains on every model are case hardened to greatly reduce wear and the heads are welded on, not just held on with a pin or bolt. Large 3" x 2.5" heads and a substantial number of flail chains ensure a fast, efficient spread rate.



Model Shown: MS/90



Flail Chains



Drive Chain

# MS Muck Spreader Range

## Prices, Specification and Options

	MS/45	MS/60	MS/75	MS/90	MS/105
<b>Price</b>	<b>£4,162</b>	<b>£4,996</b>	<b>£5,884</b>	<b>£6,963</b>	<b>£8,154</b>
Standard Tyre Size	10.0 x 15 - 10 ply	12.5 x 15 - 14 ply	385 - 65 x 22.5	385 - 65 x 22.5	NEW 400 - 60 x 22.5
Axle	60mm 6 stud	70mm 6 stud	70mm 6 stud	70mm 6 stud	80mm 8 stud
Brakes	250 x 60	300 x 60	300 x 60	300 x 60	350 x 90
Volume Capacity	4.5 cu. yds / 3.4 cu. mtrs / 750 gal	6 cu. yds / 4.6 cu. mtrs / 1000 gal	7.5 cu. yds / 5.7 cu. mtrs / 1250 gal	9 cu. yds / 6.9 cu. mtrs / 1500 gal	10.5 cu. yds / 8 cu. mtrs / 1750 gal
Hydraulic Brakes	£120	Standard	Standard	Standard	Standard
Hydraulic Lid	Standard	Standard	Standard	Standard	Standard
Drum Thickness	4mm	4mm	4mm	4.5mm	4.5mm
Ends	6mm	6mm	6mm	6mm	6mm
Case Hardened Chain Flails	1/2" / 13mm	1/2" / 13mm	1/2" / 13mm	9/16" / 14mm	9/16" / 14mm
Flail Chain - Quantity	22	28	28	34	40
HP Requirements	30	55	65	85	95
End Height	70"	73"	81"	82"	82"
Loading Height	49"	51"	58"	59"	59"
Body Dimension	8' x 52"	10' x 54"	10' x 57"	12' x 60"	14' x 60"
Lights	£151	Standard	Standard	Standard	Standard
<b>OPTIONAL EQUIPMENT</b>					
Galvanized Finish	£1,400	£1,400	£1,500	£1,500	£1,500
Slurry Bib 12 inch Deep	£135	£135	£135	£135	£135
11.5 x 15	£68	N/A	N/A	N/A	N/A
REMOULD 400 - 60R x 22.5	N/A	£326	£276	£276	NEW 400 - 60 x 22.5
550 - 60 x 22.5	N/A	N/A	N/A	£1,200	£878
Jack Screw in lieu of Skid	£85	£85	£85	£85	N/A
Feeder Unit	£1,250	£1,250	£1,250	£1,350	£1,350
LED Tail Lights	£301	£150	£150	£150	£150



Model Shown:  
MS/105



# MS Muck Spreader Range



## Reasons to Choose Marshalls

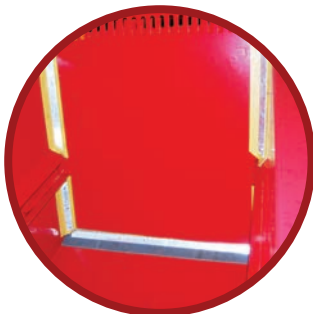
We're not afraid but the competition should be! Ask our competitors the questions below, compare our specifications, compare our prices and see why Marshalls is the right choice.

	Model	Marshall	Competitor	
1	What is the capacity of the spreader?	MS/45	4.5 cu. yds / 3.4 cu. mtrs / 750 gallons	
		MS/60	6 cu. yds / 4.6 cu. mtrs / 1000 gallons	
		MS/75	7.5 cu. yds / 5.7 cu. mtrs / 1250 gallons	
		MS/90	9 cu. yds / 6.9 cu. mtrs / 1500 gallons	
		MS/105	10.5 cu. yds / 8 cu. mtrs / 1750 gallons	
2	Are the chain heads fully welded?	MS/45	Yes - 3" x 2.5" Steel Heads	
		MS/60	Yes - 3" x 2.5" Steel Heads	
		MS/75	Yes - 3" x 2.5" Steel Heads	
		MS/90	Yes - 3" x 2.5" Steel Heads	
		MS/105	Yes - 3" x 2.5" Steel Heads	
3	What thickness is the spreader drum?	MS/45	4mm	
		MS/60	4mm	
		MS/75	4mm	
		MS/90	4.5mm	
		MS/105	4.5mm	
4	What thickness are the spreader ends?	MS/45	6mm	
		MS/60	6mm	
		MS/75	6mm	
		MS/90	6mm	
		MS/105	6mm	
5	What size are the flail chains?	MS/45	13mm Case Hardened	
		MS/60	13mm Case Hardened	
		MS/75	13mm Case Hardened	
		MS/90	14mm Case Hardened	
		MS/105	14mm Case Hardened	
6	Does the spreader have an integrated chassis?	MS/45	Yes	
		MS/60	Yes	
		MS/75	Yes	
		MS/90	Yes	
		MS/105	Yes	
7	What size of axle does the spreader have?	MS/45	6 stud 60mm 250 x 60	
		MS/60	6 stud 70mm 300 x 60	
		MS/75	6 stud 70mm 300 x 60	
		MS/90	6 stud 70mm 300 x 60	
		MS/105	8 stud 80mm 350 x 90	
8	Are lights and hydraulic brakes standard?	MS/45	Optional	
		MS/60	Standard	
		MS/75	Standard	
		MS/90	Standard	
		MS/105	Standard	
9	Does the spreader have a stainless steel lid ram?	MS/45	Standard	
		MS/60	Standard	
		MS/75	Standard	
		MS/90	Standard	
		MS/105	Standard	
10	What paint finish does the spreader have?	MS/45	Shot-blasted, 80 Microns High-build Primer, 50 Microns Polyurethane Gloss	
		MS/60	Shot-blasted, 80 Microns High-build Primer, 50 Microns Polyurethane Gloss	
		MS/75	Shot-blasted, 80 Microns High-build Primer, 50 Microns Polyurethane Gloss	
		MS/90	Shot-blasted, 80 Microns High-build Primer, 50 Microns Polyurethane Gloss	
		MS/105	Shot-blasted, 80 Microns High-build Primer, 50 Microns Polyurethane Gloss	
	Final Score:			
	Price:			



## VES Rear-Discharge Spreader Range

Model Shown:  
VES/2000 - Front



Pushing Door



Front Ram and Speed Control Valve

### No floor chains = no problems.

The Marshall VES range is the next step forward in the design of rear-discharge spreaders, eliminating the problematic floor-chain set-up and the associated maintenance requirements. This mechanism is replaced by a patented hydraulic pushing ram that is fully speed controllable and provides unmatched benefits.

**Maintenance** – the only regular maintenance required on our VES range is to grease the bearings via remote grease points and to check the oil level in the gearbox.

**Reliability** – every model utilizes a 4 stage, chrome ram that has been specifically designed and produced for our VES range for incredible reliability compared to traditional floor chains.

**Compact Design** – the removal of floor chains allows our VES range to have a shorter, deeper body that increases capacity and improves manoeuvrability.

**Ground Clearance & Traction** – the VES range also has improved ground clearance due to the removal of floor chains; 520mm minimum ground clearance on the VES/1500 model. In addition the axle on all our models can be placed further back since there is no gearbox required to drive the floor chains, this improves traction and reduces weight transfer when spreading.

**Slurry Spreading** – the VES range benefits from a completely sealed box, there are no gaps for the floor chains. Combined with the standard slurry door on all models means the VES range can hold and spread slurry.





## Tremendous strength in every spreader.

The unique hydraulic ram concept of our VES range is not its only selling feature. The robust construction and heavy-duty components used in every model means the VES range is ready for the toughest challenges.

**Gearbox** – every model uses the same robust 160hp purpose built, one piece gearbox to prevent breakages. The gearbox is also fully protected by an armoured plate underneath the rear of the spreader.

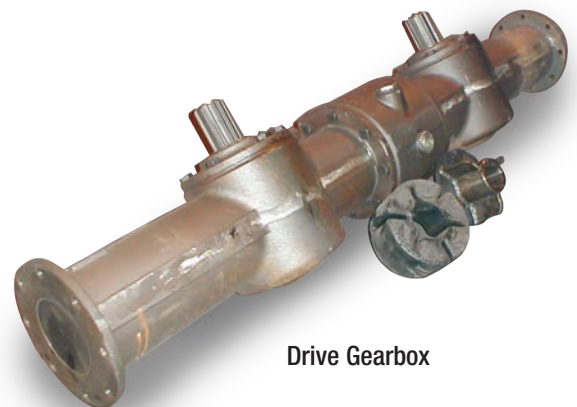
**Dual Protection System** – the entire range has two layers of protection to ensure the spreader is not damaged. Specially formulated polyurethane couplings are used to connect the beaters to the gearbox to reduce the impact of any shock-loads on the drive line and protect the gearbox. In addition every model is protected by a 10mm shear bolt in the PTO shaft.

**Rotor & Tip Design** – the VES range uses fully-balanced hand-built beaters that are constructed in-house using 12mm steel plates for maximum strength. The beater tips are also constructed from 12mm steel plates and are fully reversible to double the life-span of each tip. It is also important to note that all the tips are secured in sockets to prevent premature loss.

**Excellent Residual Value** – since our VES commenced production 10 years ago, its second-hand value has proven to hold up extremely well. This is mainly due to the ram ejection system compared to a floor chain system, which is prone to wearing over-time and is always a worry on a used machine.



Rear Beater Tips



Drive Gearbox

# VES Rear-Discharge Spreader Range

## Prices, Specification and Options

	VES/1500	VES/2000	VES/2500
<b>Price</b>	<b>£17,700</b>	<b>£22,703</b>	<b>£25,000</b>
Standard Tyre Size	18.4 x 30 - 12 ply	18.4 x 34 - 12 ply	18.4 x 34 - 12 ply
Axle	8 stud 80mm	10 stud 90mm High Speed Commercial	10 stud 90mm High Speed Commercial
Brakes	350 x 90	406 x 120 S Cam	406 x 120 S Cam
Floor Thickness	4mm	4mm	4mm
Side Thickness	4mm	4mm	4mm
Slurry Door (Removable)	Standard	Standard	Standard
Carrying Capacity	9 tons	12 tons	14 tons
Volume	1500 gal / 7500 ltr	2000 gal / 9120 ltr	2500 gal / 11400 ltr
HP Requirement	80 HP min	100 HP min	135 HP min
Body Dimensions	9' 5" x 5' x 4' 8" Deep	12' 6" x 5' x 4' 8" Deep	15' 7" x 5' x 4' 8" Deep
Loading Height	7' 2"	7' 7"	7' 7"
Unladen Weight	3400 kgs	3700 kgs	4200 kgs
Discharge Rate	5 min. max.	7 min. max.	9 min. max.
Material Feed	Hydraulic Ram	Hydraulic Ram	Hydraulic Ram
Rotor Speed	350rpm	350rpm	350rpm
Spread Width	Up to 16m	Up to 16m	Up to 16m
Standard PTO Input Speed	1000	1000	1000
Tips - Quantity	56	56	56
Overall Width - Standard Wheels	8' 10"	8' 10"	8' 10"
Overall Width - Oversized Wheels	9' 7"	9' 7"	9' 7"
Beater Protection Shear Bolt	10mm Standard	10mm Standard	10mm Standard
Main Ram Oil Volume Maximum	15 litres	20 litres	37 litres
<b>OPTIONAL EQUIPMENT</b>			
23.1 x 26 - 14 ply Tyres	£950	£950	£950
Wide Angle Shaft	£440	£440	£440
Hydraulic Light Covers	£275	£275	£275
LED Tail Lights	£150	£150	£150
LED Beacon	£135	£135	£135
Air Brakes	£1,150	£1,150	£1,150

U.K. & Ireland Patent Numbers - GB2372932 & GB2399267B

Model Shown:  
VES/2000



Model Shown:  
VES/1500





# VES Rear-Discharge Spreader Range

## 10 Reasons to Choose Marshalls

We're not afraid but the competition should be! Ask our competitors the questions below, compare our specifications, compare our prices and see why Marshalls is the right choice.

		Model	Marshall	Competitor
1	What is the material feed system on the spreader?	VES/1500	4 Stage Industrial Chrome 20-ton Hydraulic Ram - Infinitely Speed Controlled	
		VES/2000	4 Stage Industrial Chrome 20-ton Hydraulic Ram - Infinitely Speed Controlled	
		VES/2500	4 Stage Industrial Chrome 24-ton Hydraulic Ram - Infinitely Speed Controlled	
2	What is the daily maintenance requirement?	VES/1500	Grease Driveline and Rotor Bearings; Check Gearbox Oil	
		VES/2000	Grease Driveline and Rotor Bearings; Check Gearbox Oil	
		VES/2500	Grease Driveline and Rotor Bearings; Check Gearbox Oil	
3	How are the rear beaters constructed?	VES/1500	12mm Thick Steel Plate Stepped Design; Fully Balanced	
		VES/2000	12mm Thick Steel Plate Stepped Design; Fully Balanced	
		VES/2500	12mm Thick Steel Plate Stepped Design; Fully Balanced	
4	How is the spreader protected?	VES/1500	Specially Formulated Polyurethane Drive; 10mm Shear Bolt Protection	
		VES/2000	Specially Formulated Polyurethane Drive; 10mm Shear Bolt Protection	
		VES/2500	Specially Formulated Polyurethane Drive; 10mm Shear Bolt Protection	
5	Does the spreader have a slurry door as standard?	VES/1500	Yes - Ensures Completely Sealed Box	
		VES/2000	Yes - Ensures Completely Sealed Box	
		VES/2500	Yes - Ensures Completely Sealed Box	
6	How many tips does the spreader have?	VES/1500	56 - Galvanised, Fully Reversible & Socketed with a Close Inter-meshing	
		VES/2000	56 - Galvanised, Fully Reversible & Socketed with a Close Inter-meshing	
		VES/2500	56 - Galvanised, Fully Reversible & Socketed with a Close Inter-meshing	
7	What thickness is the floor?	VES/1500	4mm	
		VES/2000	4mm	
		VES/2500	4mm	
8	What thickness are the sides?	VES/1500	4mm	
		VES/2000	4mm	
		VES/2500	4mm	
9	What size of axle does the spreader have?	VES/1500	8 stud 80mm 350 x 90	
		VES/2000	10 stud 90mm 406 x 120 S Cam Commercial	
		VES/2500	10 stud 90mm 406 x 120 S Cam Commercial	
10	What paint finish does the spreader have?	VES/1500	Shot-blasted, 80 Microns High Build Primer, 50 Microns Polyurethane Gloss	
		VES/2000	Shot-blasted, 80 Microns High Build Primer, 50 Microns Polyurethane Gloss	
		VES/2500	Shot-blasted, 80 Microns High Build Primer, 50 Microns Polyurethane Gloss	
		<b>Final Score:</b>		
		<b>Price:</b>		



## ST Slurry Tanker Range



Model Shown: ST/2000 Gallon Tanker  
750/60 x 30.5 Wheels



Model Shown: ST/1600 Gallon Tanker 550 - 60 x 22.5 Wheels

### Durable by design.

The ST slurry tanker range has been developed with strength and durability as the guiding principles.

**Tank Design** – every model has a 6mm thick steel tank that is rolled and fully-welded by a sub-arc welder to ensure a consistent and robust finish. Inside the tank there are baffles to ensure material is transported safely and reinforcing rings to further enhance the tanks strength. It is also important to note that all our tanks hold the stated capacity; even our LGP cut in tanks are increased in size to compensate for the cut-out part.

**Chassis Design** – The overall rigidity of our tanker range is boosted by our integral chassis, which supports the tank to reduce fatigue and prevent premature failure.

**Axles & Brakes** – every model has hydraulic brakes as standard with the option to upgrade to air brakes. Our ST/2000 model upwards has 406x120 10 stud commercial axles and spring drawbars as standard to ensure safe movement on the road. Dropped axles are also standard on these larger models to lower the centre of gravity and improve stability.

**Lights** – lights are also standard on all models with the option to upgrade to LED lights and fit a LED beacon.





## Easy to fill. Easy to spread.

Every model in the range has been intelligently designed for excellent everyday usability and practicality.

**Pump** – either an 8,000ltr or 10,000ltr Hertell pump is standard on our tankers to ensure fast filling and discharging of material. There is also an option to fit a hydraulic drive pump or Garda pump depending on the application of the tanker.

**Dual Slurry Trap System** – the entire range benefits from our dual protection system. The first line of protection is a specially designed double-ball set-up in the tank that stops the vacuum once it has reached a certain level. If any froth should manage to by-pass this system then there is a slurry trap in the large syphon box to catch any residue.

**Valves** – every model has a hand operated side valve as standard, which can also be positioned on the rear to allow for easy filling. It is also possible to specify a different position for filling valves as an option.

**Gauge & Sight-glasses** – all our models have a liquid filled 75mm gauge to provide accurate pressure readings and ensure safe loading of the tank. Furthermore two sight-glasses at the front and rear of the tanker allow the operator to know when the tank is full.



Model Shown: ST/1200



Hydraulic Pump



Garda Pump



Autoloader

# ST Slurry Tanker Range

## Prices, Specification and Options

	ST/1200	ST/1400	ST/1600	ST/1800	ST/2000	ST/2300	ST/2550
<b>Price</b>	<b>£6,781</b>	<b>£7,425</b>	<b>£8,891</b>	<b>£9,442</b>	<b>£14,450</b>	<b>£15,041</b>	<b>£16,300</b>
Standard Tyre Size	385 - 65 x 22.5	385 - 65 x 22.5	550 - 60 x 22.5	550 - 60 x 22.5	750/60 - 30.5	750/60 - 30.5	750/60 - 30.5
Axle	70mm 6 stud	80mm 8 stud	80mm 8 stud	80mm 8 stud	90mm 10 stud High Speed Commercial Drop-axle	90mm 10 stud High Speed Commercial Drop-axle	90mm 10 stud High Speed Commercial Drop-axle
Brakes	300 x 60	350 x 90	350 x 90	350 x 90	406 x 120 S Cam	406 x 120 S Cam	406 x 120 S Cam
Volume	1220 gal / 5500 ltr	1400 gal / 6300 ltr	1550 gal / 7000 ltr	1800 gal / 8200 ltr	2150 gal / 9800 ltr	2340 gal / 10650 ltr	2560 gal / 11600 ltr
Side Valve	Standard	Standard	Standard	Standard	Standard	Standard	Standard
Tank Thickness	6mm	6mm	6mm	6mm	6mm	6mm	6mm
Lights and Brakes	Standard	Standard	Standard	Standard	Standard	Standard	Standard
Drum Diameter	5' 3"	5' 3"	5' 3"	5' 3"	5' 3"	6'	6'
Pump - Hertell	8000 ltr	8000 ltr	8000 ltr	8000 ltr	10000 ltr	10000 ltr	10000 ltr
6 inch Hose	15'	15'	15'	15'	15'	20'	20'
Unladen Weight	1730 kgs	2120 kgs	2330 kgs	2540 kgs	2860 kgs	3400 kgs	3790 kgs
<b>OPTIONAL EQUIPMENT</b>							
REMOULD 400 - 60R x 22.5	£276	N/A	N/A	N/A	N/A	N/A	N/A
550 - 60 x 22.5	N/A	£821	Standard	Standard	N/A	N/A	N/A
Spring Drawbar	£782	£782	£782	£782	Standard	Standard	Standard
Tanker Hydraulic Hatch	£590	£590	£590	£590	£590	£590	£590
Tanker Manual Hatch	£390	£390	£390	£390	£390	£390	£390
Full Opening Rear Door	£810	£810	£810	£810	£810	£810	£810
Mud Guards	£335	£335	£335	£335	Standard	Standard	Standard
10,000 ltr Pump Hertell	N/A	£340	£340	£340	Standard	Standard	Standard
Hydraulic Pump	£700	£700	£700	£700	£700	£700	£700
Garda Pump c/w Spreader	£4,128	£4,128	£4,128	£4,128	£4,128	£4,128	£4,128
90 degree Bend Complete	£175	£175	£175	£175	£175	£175	£175
Extra Complete Hand Operated Valve	£340	£340	£340	£340	£340	£340	£340
Wash Down Hose	£171	£171	£171	£171	£171	£171	£171
Quick Attach Coupling	£175	£175	£175	£175	£175	£175	£175
Pump Hydraulic Changeover	£170	£170	£170	£170	£170	£170	£170
Auto Load	£2,617	£2,617	£2,617	£2,617	£2,617	£2,617	£2,617
Marshall Easy-Connect	£800	£800	£800	£800	£800	£800	£800
Air Brakes	£1,150	£1,150	£1,150	£1,150	£1,150	£1,150	£1,150
LED Tail Lights	£150	£150	£150	£150	£150	£150	£150
LED Beacon	£135	£135	£135	£135	£135	£135	£135



Model Shown: ST/2550



Model Shown: ST/1600 - Full-opening Rear Door



# ST Slurry Tanker Range



## Reasons to Choose Marshalls

We're not afraid but the competition should be! Ask our competitors the questions below, compare our specifications, compare our prices and see why Marshalls is the right choice.

	Model	Marshall	Competitor
<b>1</b> What size of pump does the tanker have?	ST/1200	8,000 ltr	
	ST/1400	8,000 ltr	
	ST/1600	8,000 ltr	
	ST/1800	8,000 ltr	
	ST/2000	10,000 ltr	
	ST/2300	10,000 ltr	
	ST/2550	10,000 ltr	
<b>2</b> Does the tanker have a slurry trap system?	ST/1200	Dual System - Primary Double-ball Set-up / Secondary Syphon Box Trap	
	ST/1400	Dual System - Primary Double-ball Set-up / Secondary Syphon Box Trap	
	ST/1600	Dual System - Primary Double-ball Set-up / Secondary Syphon Box Trap	
	ST/1800	Dual System - Primary Double-ball Set-up / Secondary Syphon Box Trap	
	ST/2000	Dual System - Primary Double-ball Set-up / Secondary Syphon Box Trap	
	ST/2300	Dual System - Primary Double-ball Set-up / Secondary Syphon Box Trap	
	ST/2550	Dual System - Primary Double-ball Set-up / Secondary Syphon Box Trap	
<b>3</b> What thickness is the tanker drum?	ST/1200	6mm	
	ST/1400	6mm	
	ST/1600	6mm	
	ST/1800	6mm	
	ST/2000	6mm	
	ST/2300	6mm	
	ST/2550	6mm	
<b>4</b> What is the capacity of the tanker?	ST/1200	1,220 Gallons / 5,500 ltr	
	ST/1400	1,400 Gallons / 6,300 ltr	
	ST/1600	1,550 Gallons / 7,000 ltr	
	ST/1800	1,800 Gallons / 8,200 ltr	
	ST/2000	2,150 Gallons / 9,800 ltr - this figure is not reduced by cut-in for wheels	
	ST/2300	2,340 Gallons / 10,650 ltr - this figure is not reduced by cut-in for wheels	
	ST/2550	2,560 Gallons / 11,600 ltr - this figure is not reduced by cut-in for wheels	
<b>5</b> Does the tanker have a full support chassis?	ST/1200	Yes - Full Chassis Minimizing Stress on the Tank	
	ST/1400	Yes - Full Chassis Minimizing Stress on the Tank	
	ST/1600	Yes - Full Chassis Minimizing Stress on the Tank	
	ST/1800	Yes - Full Chassis Minimizing Stress on the Tank	
	ST/2000	Yes - Full Chassis Minimizing Stress on the Tank	
	ST/2300	Yes - Full Chassis Minimizing Stress on the Tank	
	ST/2550	Yes - Full Chassis Minimizing Stress on the Tank	
<b>6</b> What is the tanker's unladen weight?	ST/1200	1,730 kgs	
	ST/1400	2,120 kgs	
	ST/1600	2,330 kgs	
	ST/1800	2,540 kgs	
	ST/2000	2,860 kgs	
	ST/2300	3,400 kgs	
	ST/2550	3,790 kgs	
<b>7</b> Does the tanker have internal baffles and reinforcing rings?	ST/1200	Reinforcing Rings Only	
	ST/1400	Reinforcing Rings Only	
	ST/1600	Yes	
	ST/1800	Yes	
	ST/2000	Yes	
	ST/2300	Yes	
	ST/2550	Yes	
<b>8</b> What size of axle does the tanker have?	ST/1200	6 stud 70mm 300 x 60	
	ST/1400	8 stud 80mm 350 x 90	
	ST/1600	8 stud 80mm 350 x 90	
	ST/1800	8 stud 80mm 350 x 90	
	ST/2000	10 stud 90mm 406 x 120 S Cam Commercial; Drop Axle	
	ST/2300	10 stud 90mm 406 x 120 S Cam Commercial; Drop Axle	
	ST/2550	10 stud 90mm 406 x 120 S Cam Commercial; Drop Axle	
<b>9</b> What is the standard tyre on the tanker?	ST/1200	385-65 x 22.5	
	ST/1400	385-65 x 22.5	
	ST/1600	550-60 x 22.5	
	ST/1800	550-60 x 22.5	
	ST/2000	750-60 x 22.5	
	ST/2300	750-60 x 22.5	
	ST/2550	750-60 x 22.5	
<b>10</b> What paint finish does the tanker have?	ST/1200	Shot-blasted, 80 Microns High-build Primer, 50 Microns Polyurethane Gloss	
	ST/1400	Shot-blasted, 80 Microns High-build Primer, 50 Microns Polyurethane Gloss	
	ST/1600	Shot-blasted, 80 Microns High-build Primer, 50 Microns Polyurethane Gloss	
	ST/1800	Shot-blasted, 80 Microns High-build Primer, 50 Microns Polyurethane Gloss	
	ST/2000	Shot-blasted, 80 Microns High-build Primer, 50 Microns Polyurethane Gloss	
	ST/2300	Shot-blasted, 80 Microns High-build Primer, 50 Microns Polyurethane Gloss	
	ST/2550	Shot-blasted, 80 Microns High-build Primer, 50 Microns Polyurethane Gloss	
	<b>Final Score:</b>		
	<b>Price:</b>		



## Livestock Container Range



Model Shown: 28' Aluminium Removable Container



Model Shown: 21' Fixed Livestock Container

### The ultimate way for livestock to travel.

Our livestock container range provides a simple, efficient and good value way to shift livestock between farms or transport them to market.

**Value** – our livestock containers all provide an excellent value method for moving livestock. There is no need to have an HGV license or to have passed a trailer test; simply the ability to drive a tractor. Our fixed livestock containers are particularly good value, starting at £10,478 retail, there are few other ways to move livestock at that price.

**Box Design** – every model is constructed from steel or aluminium and has its own chequered plate floor that is coated with anti-slip paint. Internal slam-shut dividing gates are standard on all models and can be positioned anywhere along the length of the container.

**Loading Ramp Design** – all models benefit from an aluminium chequered plate loading ramp that has two helper springs to assist closing and opening.



# Livestock Container Range

## Prices, Specification and Options

	21	25	28	32
<b>Steel Container</b>	<b>£6,978</b>	<b>£7,825</b>	<b>£8,808</b>	<b>£9,908</b>
<b>Steel Box and Trailer - Fixed</b>	<b>£10,478</b>	<b>£13,075</b>	<b>£14,773</b>	<b>£16,376</b>
<b>Steel Box and Trailer - Dismountable</b>	<b>£13,007</b>	<b>£15,925</b>	<b>£18,073</b>	<b>£20,308</b>
<b>Basic Price - Aluminium</b>	<b>£10,472</b>	<b>£11,742</b>	<b>£13,375</b>	<b>£15,108</b>
<b>Aluminium Box and Trailer - Dismountable</b>	<b>£16,501</b>	<b>£19,842</b>	<b>£22,640</b>	<b>£25,508</b>
Trailer Model	BC21 12.5 Wls	BC25 12 Ton	BC28 14 Ton	BC32 14 Ton
Axle Size on Fixed Trailer	70mm 6 stud	80mm 8 stud	80mm 8 stud	80mm 8 stud
Container Size	21' x 8'	25' x 8'	28' x 8'	32' x 8'
Unladen Weight - Steel	1800 kgs	2145 kgs	2400 kgs	2700 kgs
Unladen Weight - Aluminium	1400 kgs	1695 kgs	1890 kgs	2150 kgs
Approximate Carrying Weight	8000 kgs	10000 kgs	12000 kgs	12000 kgs
Internal Loading Height	6' 6"	6' 6"	6' 6"	6' 6"
Internal Cattle / Sheep Divisions	1	2	2	3
<b>OPTIONAL EQUIPMENT</b>				
Sheep Decks	£3,400	£3,600	£3,800	£4,200
Additional Internal Divisions - Galvanized	£664	£664	£664	£664
Front Escape Hatch	£680	£680	£680	£680



Model Shown: Bespoke 25' Steel Fixed Container



Sheep Decks



## FT Feed Trailer Range

Model Shown:  
FT/20 Feed Trailer



Prices, specification and options.

Tough, strong and durable.

**Construction** – tapered sides to allow for easy feeding. Every model also benefits from a fully welded steel construction with 5mm ends and 3mm or 4mm sides.

**Floor** – the entire range has 30mm treated pine floors, which allows effluent to escape and can easily be replaced when worn out.

**Full Opening Removable Rear Door** – allows feed trailers to be easily cleaned out.

**Retractable Drawbar** – maximizes number of available feed spaces.

**Axles** – new 6 stud 70mm beam axles are used on both models in the range.

	FT/15	FT/20
<b>Price</b>	<b>£2,000</b>	<b>£2,600</b>
Length	15' x 5' 6"	20' x 5' 6"
Feed Spaces	32	40
Sides	3mm Steel	4mm Steel
Front	5mm Steel	5mm Steel
Axles	6 stud 70mm	6 stud 70mm
Tyres	11.5 x 15 - 10 ply	12.5 x 15 - 14 ply
Retractable Drawbar	Yes	Yes
Swinging Removable Taildoor	Yes	Yes
<b>OPTIONAL EQUIPMENT</b>		
Tombstone Sides	£350	£350





## FB Feed Barrier Range



Model Shown: FB/6

Prices, specification and options.

	FB/6
<b>Price</b>	<b>£1,100</b>
<b>Length</b>	<b>6m</b>
<b>Feed Spaces</b>	<b>16</b>
<b>Ends</b>	<b>5mm Steel</b>
<b>Frame</b>	<b>Steel Box Section</b>
<b>Floor &amp; Sides</b>	<b>30mm Treated Pine</b>

Simple and strong.

**Frame Design** – box section steel framework, which benefits from a fully welded construction for strength and rigidity. The ends of our feed barriers are also profiled from 5mm steel to further enhance the build quality.

**Side & Floor Design** – 30mm treated pine is used for the floor and sides, which allows effluent to escape and can be easily replaced when worn out.

# Tyre Guide

Tyres are an important decision when specifying a trailer so let us help you make the correct choice. This guide will give you information about the different tyres we offer and explain what the tyre sizes mean.

## Tyre Information



	TYRE SIZE	TYPE	DESCRIPTION
1	26 x 12.0 x 12	Floatation	Fits to small trailers and provides fantastic floatation.
2	12.5 x 15.3	Floatation	Primarily designed to provide floatation for field work.
3	15 x 55 x 17	Floatation	This wide tyre provides floatation above a 12.5 x 15.3.
4	340 - 65 x 18	New Radial	Also known as a mini super single, it is excellent for road work.
5	385 x 65 x 22.5	Radial - Remould	Also known as a super single and designed for road performance.
6	400 - 60R x 22.5	Radial - Remould	Similar to a super single but marginally wider for better floatation.
7	400 - 60 x 22.5	Floatation	Hockey stick pattern designed for the field.
8	16 x 70 x 20TT	Floatation	The track tread means this tyre is excellent at field work.
9	16.5 x 70 x 18	Floatation	Extremely durable tyre that performs well in the field.
10	445 - 45 x 19.5	New Radial	Low and wide radial tyre designed for high speed road performance.
11	550 - 45 x 22.5	Floatation	Excellent tyre for floatation, designed primarily for the field.
12	560 - 45 x 22.5	New Radial	Designed to provide good road performance and floatation.
13	550 - 60 x 22.5	Floatation	Excellent tyre for floatation, designed primarily for the field.
14	560 - 60 x 22.5	New Radial	Designed to provide good road performance and floatation.
15	18.4 x 30	Floatation	The track tread pattern ensures this tyre excels in the field.
16	750 - 60 x 30.5	Floatation	Massive tyre to provide incredible floatation.

## Tyre Sizes Explained

# 385 - 65 x 22.5

The first number indicates the width of the tyre and can be metric or imperial. In this example the width of the tyre would be 385mm.

The second number is the depth of the sidewall as a percentage of the tyre width. In this example 65% of 385mm meaning the sidewall of the tyre is 250mm deep.

The final number is the diameter of the tyre's centre and is usually in imperial. In this example the tyre centre has a diameter of 22.5".

## Tyre Notes

All 385 - 65 x 22.5 tyres are rebuilt tyres fitted to new centres.

All 400 - 60R x 22.5 tyres are rebuilt tyres fitted to new centres.

All 405 - 60 x 22.5 tyres are rebuilt tyres fitted to new centres.

If 550 - 45 x 22.5 or 560 - 45 x 22.5 tyres are fitted to QM/11, QM/12 or QM/1200 models then mudguards are required - see page 16.

If 560 - 60 x 22.5 or 550 - 60 x 22.5 tyres are fitted to QM Models then the loading height of the trailers increases by 8".

Correct tyre pressures are available on our website [www.marshall-trailers.co.uk/downloads](http://www.marshall-trailers.co.uk/downloads)



## Running Gear Guide

The relatively recent increase in tractor speeds and travelling distances means that it is critical to specify the correct axles, brakes and suspension when deciding on a new trailer. Accordingly our guide to running gear highlights the important specs to look for and explains how Marshalls can meet these challenges.

### Axles

Marshalls have always recognised the importance of fitting the appropriate axles to all the models in our range since they have such an effect on machine performance and safety. Unfortunately it is an area where many of our competitors cut-corners and fit axles that cannot cope with modern farming practices. Therefore it has become more important than ever to understand axle sizes when you are comparing machines to ensure they are up to standard; read our axle size explanation below to find out more:

## 10 stud 127mm 420 x 180 S-Cam



The number of studs indicates the size of wheel that can be fitted to the axle. The more studs the larger the wheel that can safely be fitted. If too large a tyre is fitted to an axle it can damage studs or shear the entire hub from the beam.



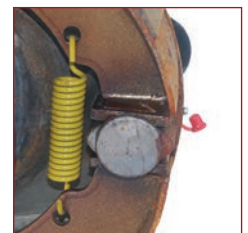
The larger the beam size the greater the axle's carrying capacity.



The first number indicates the diameter of the brake drum and the second number the width of the brake shoe. It is important for these numbers to match up to maximize braking efficiency. If they do not match up then the brakes will not be working at the correct temperature and braking force will be lost. It is also important to identify how the brake drum has been produced, whether it is cast or pressed steel. Cast drums dissipate heat better and ensure the brakes work at the optimum temperature.



The type of cam an axle has signifies whether the axle is commercial; only commercial axles have an S-Cam. The advantage of an S-Cam is it forces the brake shoe more evenly against the brake drum compared to a flat cam, therefore increasing the braking force of the axle.



8 Stud Flat Cam



10 Stud S - Cam

#### Axles Notes

On our QM/14, QM/1400, QM/16 and QM/1600 models 10 stud 127mm 420x180 S-Cam commercial axles are standard. This is the same size of axle used by HGVs.

### Brakes

The braking system is another key part of the running gear of any trailer, particularly when travelling at higher speeds for longer distances. Accordingly Marshalls offer a number of different braking options to ensure our machines exceed the current legislation and will be ready for any future changes to the law.

**Hydraulic Brakes** – this is the standard braking system on all ranges of machines since every tractor can operate hydraulic brakes. Depending on the model, either 20mm or 25mm brake cylinders are fitted to each brake actuator. This set-up has been fully tested and currently exceeds the current 25% efficiency braking regulations. Load sensing is also available as an option on our hydraulic braking systems.

**Air Brakes c/w Load Sensing** – we offer air brakes as an optional extra on many of our models. This supplements our standard hydraulic braking system to ensure that all tractors can safely tow the trailer, even if they are not equipped for air brakes. It is also important to note that all our air brake kits come with load sensing as standard to prevent locking up and skidding the machine tyres. In addition all our brake kits have a twin line system, with a service for normal braking and an emergency, which automatically engages the brakes in the event of a break away.

**ABS** – the ultimate braking solution, our ABS package comes with 10 stud commercial axles and air brakes. It eliminates the possibility of skidding the tyres and provides maximum braking efficiency.

#### Brakes Notes

Load sensing for hydraulic or air braking systems is only available on machines with spring suspension.

# Optional Equipment



Air Brakes



Oil Brakes LSV



Hyd Door Safety Valve



8" Hatch



12" Hatch



Perspex Front Window - Small



Perspex Front Window - Large



Trailer Cover



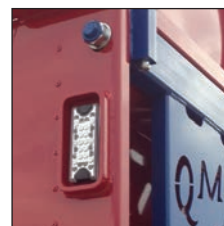
Roll-over Cover



Dual Lights



LED Lights



High Level LED Lights



LED Beacon



Spring Drawbar



Rear Tow Hitch



Hyd Up & Over Grain Door



Hyd Grain Door c/w Silage Attachment



Bale Extension



Top and Bottom Hinged Door



Mesh Sides



Jack Screw



Rear Ramps



Rear Box Pusher & Hydraulic Walkway



Rear Toolbox



Slurry Bib



Feeder Unit



Full Opening Rear Door



Tanker Hydraulic Hatch



Quick Attach Coupling



Escape Hatch



## Terms & Conditions

All photographs and specifications used were current when this pricelist was prepared but due to constant endeavour to improve our products, specification and prices, changes may be made without prior notice.

This cancels all previous pricelists.

All prices are subject to additional VAT.

All machines are subject to carriage of £145.00 to a UK mainland address. Shipping charges extra where applicable. Additional equipment if ordered separately will be charged at net carrier cost.

## Thanks

Thank you to all our loyal customers for your continued support, we really do appreciate your business. If you would like your Marshall machine to be featured on our website, facebook page or next pricelist then please send your pictures to charlesp@marshall-trailers.co.uk

Thank you to Ravenhill Ltd Dyce for lending us a tractor to be photographed with our products.

*The Marshall Trailers Team*

## Notes

---

---

---

---

---

---

---

---

---

---

---

---

---

---

---

---

---

---

---

---

---

---

---

---





**MARSHALL**  
 Engineering excellence for 60 years



[www.marshall-trailers.co.uk](http://www.marshall-trailers.co.uk)



[www.facebook.com/marshalltrailers](https://www.facebook.com/marshalltrailers)

Charles J Marshall (Aberdeen) Ltd.  
 Chapel Works, Bucksburn, Aberdeen AB21 9TL  
 Tel: 01224 722777  
 Fax: 01224 724034

Email: [charles@marshall-trailers.co.uk](mailto:charles@marshall-trailers.co.uk)

Thank you to our loyal customers for their continued support, if you would like your Marshall machine to be featured on our facebook page and possibly in our 2015 pricelist then please send us your photos.

